

# ÜBERNACHTUNGSPLÄTZE

## USA REISE

22.1.2018 BIS 1.1.2019

[WWW.WILDE-WEITE-WELT.DE](http://WWW.WILDE-WEITE-WELT.DE)

# INHALTSVERZEICHNIS

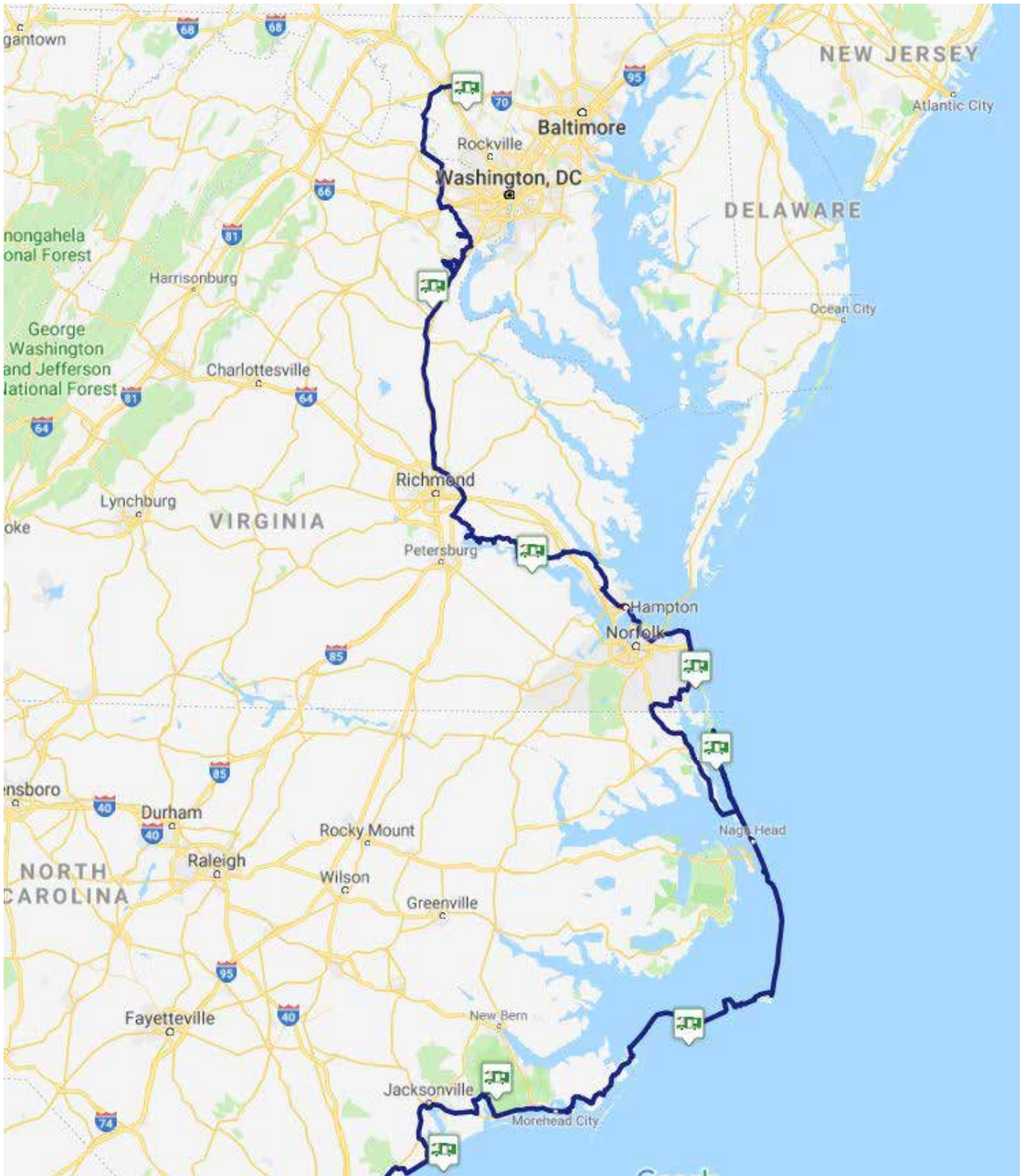
VIRGINIA UND NORTH CAROLINA.....	3
SOUTH CAROLINA UND GEORGIA.....	6
FLORIDA .....	10
ALABAMA - MISSISSIPPI - LOUISIANA.....	20
TEXAS .....	23
NEW MEXICO.....	32
UTAH, ARIZONA, NEVADA .....	47
NEVADA UND OREGON .....	51
WASHINGTON .....	55
IDAHO UND MONTANA.....	66
WYOMING UND SOUTH DAKOTA.....	73
COLORADO .....	84
UTAH .....	91
NEVADA.....	110
KALIFORNIEN.....	113





# VIRGINIA UND NORTH CAROLINA

22.01.2018 BIS 29.01.2018



**Virginia:** 3 Tage - 666 km - 222 km pro Tag - **North Carolina:** 4 Tage - 734 km - 184 km pro Tag



# Übernachtungsplätze 2018



1. TAG:  
DIENSTAG, 23.1.2018

WALMART STAFFORD  
VIRGINIA

Surprisingly quiet place behind Walmart.  
From 5 am noisy because of delivery trucks.

**GPS:** N 38°28'34", W 77°28'24"  
**Height:** 75 m  
**Quality:** \*  
**Rate:** --



2. TAG:  
MITTWOCH, 24.1.2018

CHICKAHOMINY RIVERFRONT  
PARK  
VIRGINIA

Nice campground with trees directly at  
Chickahominy River. We have been alone  
during off season. In Summer it will get  
crowded because the lots are tiny.

**GPS:** N 37°16'10", W 76°52'35"  
**Height:** 4 m  
**Quality:** \*\*\*  
**Rate:** \$ 31



3. TAG:  
DONNERSTAG, 25.1.2018

SANDBRIDGE BEACH SOUTH OF  
VIRGINIA BEACH  
VIRGINIA

Municipal Parking at the Public Beach. Until  
10 pm very noisy because of military jets,  
from 5 am very noisy because of traffic.

**GPS:** N 36°44'43", W 75°56'39"  
**Height:** 2 m  
**Quality:** \*  
**Rate:** --



# Übernachtungsplätze 2018



4. TAG:  
FREITAG, 26.1.2018

CURRITUCK LIGHTHOUSE /  
WILDLIFE CENTER  
OUTER BANKS, NORTH CARO-  
LINA

Parking lot of the Wildlife Information Center in Corolla directly at Currituck Lighthouse. No overnight parking forbidden sign like at many other parking spots on the Outer Banks.

**GPS:** N 36°22'33", W 75°59'52"  
**Height:** 2 m  
**Quality:** \*\*  
**Rate:** --



5. TAG:  
SAMSTAG, 27.1.2018

OCRACOCKE HARBOR  
OUTER BANKS, NORTH CARO-  
LINA

Big parking lot of the visitor center directly at Ocracoke Harbor. Very quiet during off season.

**GPS:** N 35°07'02", W 75°59'08"  
**Height:** 1 m  
**Quality:** \*\*  
**Rate:** --



6. TAG:  
SONNTAG, 28.1.2018

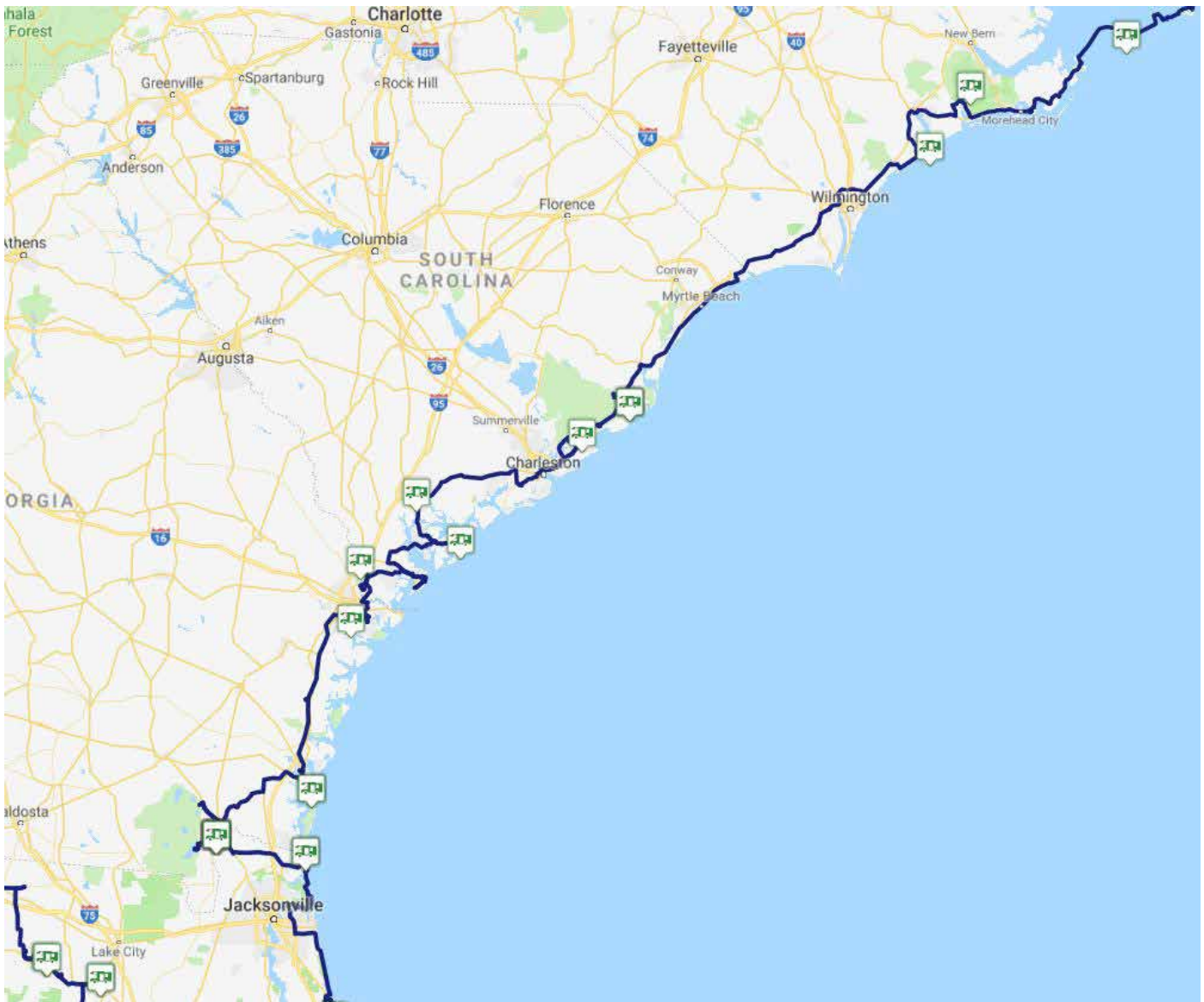
GREAT LAKE BOAT RAMP  
CROATIAN NATIONAL FOREST,  
NORTH CAROLINA

Boat Ramp at Great Lake in the Croatian National Forest. Not very beautiful, view to the lake is blocked by trees. Fire pits show the common use as a campsite. The approach is via a 6 mile dirt road that was in excellent condition.

**GPS:** N 34°51'35", W 77°03'07"  
**Height:** 10 m  
**Quality:** \*\*  
**Rate:** --

# SOUTH CAROLINA UND GEORGIA

30.01.2018 BIS 11.02.2018



**South Carolina:** 7 Tage - 780 km - 111 km pro Tag - **Georgia:** 6 Tage - 522 km - 87 km pro Tag



# Übernachtungsplätze 2018



7. TAG:  
MONTAG, 29.1.2018

NORTH TOP SAIL BEACH  
NORTH CAROLINA

Public Beach Parking directly at the sea at the northernmost end of North Top Sail Beach. The Police told us camping is not allowed at the beach and at the parking lot, but parking a car at night is ok. They would not kick us out if we do not disturb anybody.

**GPS:** N 34°31'44", W 77°20'40"  
**Height:** 2 m  
**Quality:** \*\*\*  
**Rate:** --



8.-10. TAG:  
DIENSTAG, 30.1.2018 BIS  
DONNERSTAG, 1.2.2018

SANTEE COASTAL REFUGE  
SOUTH CAROLINA

Nice campground free of charge operated by the South Carolina Department of Natural Resources. Campsites shaded by big Virginia Oak Trees. No facilities, very quiet and peaceful. Lots of mosquitos in Summer.

**GPS:** N 33°09'15", W 79°22'01"  
**Height:** 5 m  
**Quality:** \*\*\*  
**Rate:** --



11. TAG:  
FREITAG, 2.2.2018

FRANCIS MARION NATIONAL  
FOREST, ION SWAMP ROAD  
SOUTH CAROLINA

Boondocking in a small pulloff at Ion Swamp Road in Francis Marion National Forest.

**GPS:** N 32°59'34", W 79°40'27"  
**Height:** 5 m  
**Quality:** \*\*  
**Rate:** --



# Übernachtungsplätze 2018



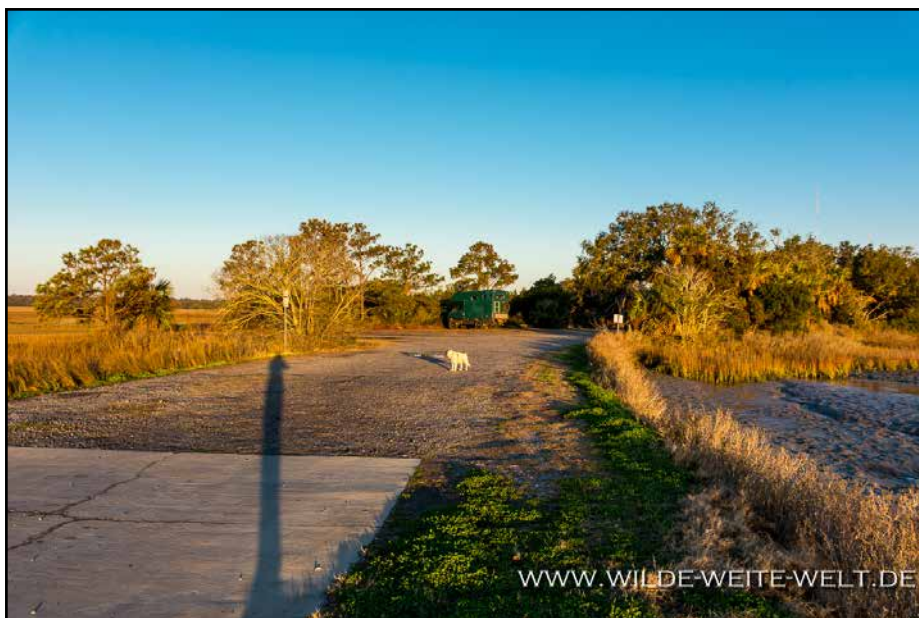
12. TAG:  
SAMSTAG, 3.2.2018

SUGAR HILL LANDING BOAT  
RAMP, ACE BASIN NATIONAL  
WILDLIFE REFUGE

SOUTH CAROLINA

Nice and quiet spot at Sugar Hill Landing  
Boat Ramp in Ace Basin National Wildlife  
Refuge. 48 hours parking permitted.

**GPS:** N 32°39'58", W 80°45'17.5"  
**Height:** 5 m  
**Quality:** \*\*\*  
**Rate:** --



13. TAG:  
SONNTAG, 4.2.2018

BUTCHS ROAD BOAT RAMP,  
ST. HELENA ISLAND

SOUTH CAROLINA

Short side road on the way to Hunting  
Island just before the draw bridge. Close  
to Sea Island Parkway and a little bit noisy  
because of few traffic. Views across extensi-  
ve ward creek marshes.

**GPS:** N 32°24'30", W 80°28'02"  
**Height:** 1 m  
**Quality:** \*\*  
**Rate:** --



14. TAG:  
MONTAG, 5.2.2018

MILL STONE LANDING,  
HARDEEVILLE

SOUTH CAROLINA

Big parking lot at Mills Landing Boat Ramp  
at the Savannah River. Quiet because the  
road gets dirty just after Mills Landing.

**GPS:** N 32°17'30", W 81°07'05.5"  
**Height:** 3 m  
**Quality:** \*\*  
**Rate:** --



# Übernachtungsplätze 2018



15. TAG:  
DIENSTAG, 6.2.2018

BELLS LANDING, SAVANNAH  
GEORGIA

Boat ramp close to Savannah with nice sunset and view of grassy marshes. Quiet Place. Police patrolled, but said nothing.

**GPS:** N 31°58'24", W 81°10'18"  
**Height:** 2 m  
**Quality:** \*\*  
**Rate:** --



16. TAG:  
MITTWOCH, 7.2.2018

JEKYLL ISLAND BOAT RAMP  
GEORGIA

Secluded Boat Ramp behind a big pond on Jekyll Island. Not visible from the street. Very little noise from distant bridge to Jekyll Island in the morning.

**GPS:** N 31°02'29", W 81°25'17"  
**Height:** 1 m  
**Quality:** \*\*  
**Rate:** --



17. - 20. TAG:  
DONNERSTAG, 5.2.2018 BIS  
SONNTAG, 11.2.2018

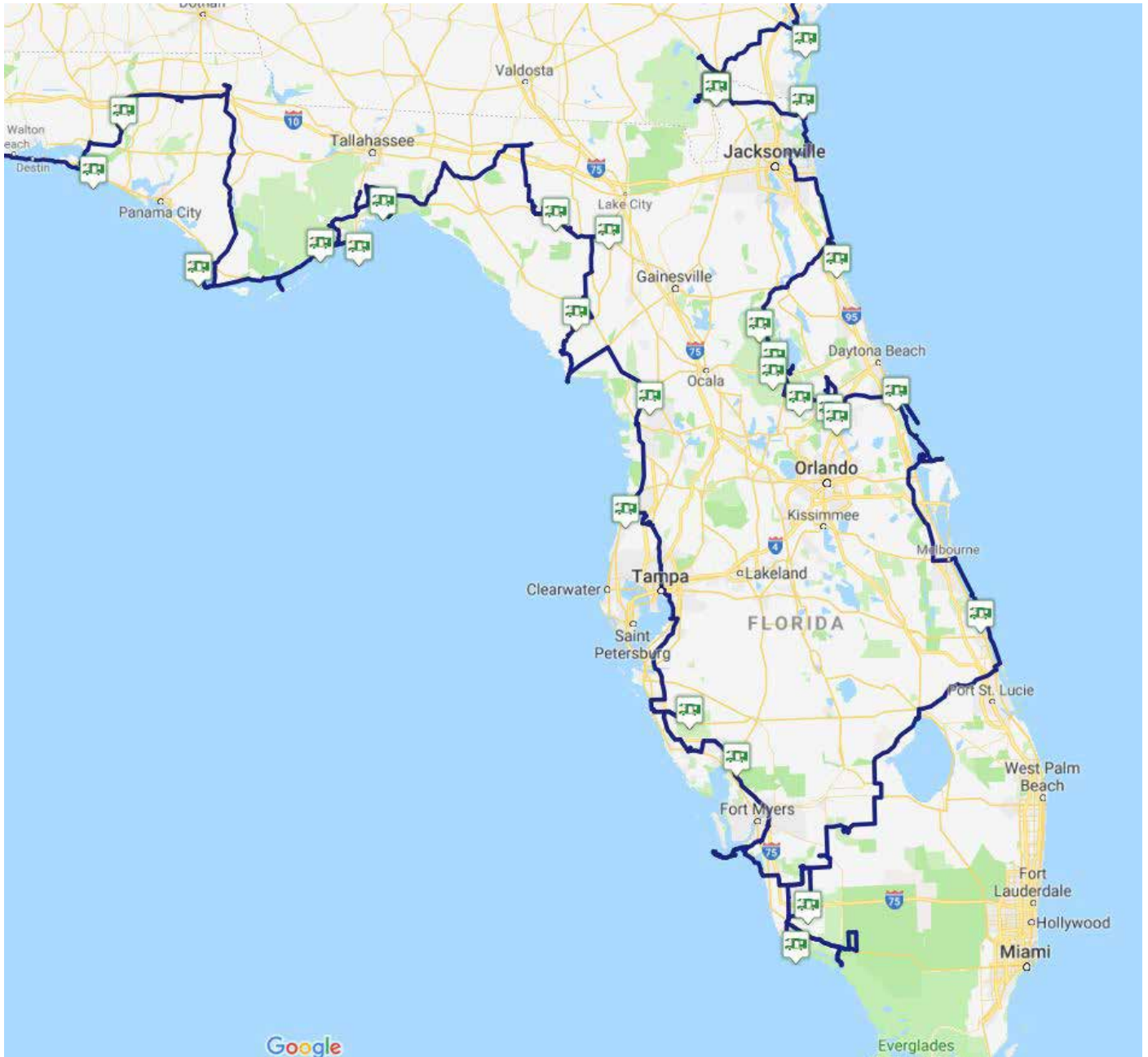
TRADERS HILL CAMPGROUND  
GEORGIA

Small Campground close to Okefenokee Main Entrance with tent sites (\$10) and RV sites (\$20) shaded from big live oak trees. Quietness disturbed by some trains. We stayed for 4 nights. No one came to collect the camping fee and no one cares for the campground during our stay.

**GPS:** N 30°46'47", W 82°01'39"  
**Height:** 36 m  
**Quality:** \*\*\*  
**Rate:** --

# FLORIDA

12.02.2018 BIS 09.03.2018



**Florida:** 26 Tage - 3964 km - 152 km pro Tag



# Übernachtungsplätze 2018



21. TAG:  
MONTAG, 12.2.2018

FERNANDINA BEACH BOAT  
RAMP, AMELIA ISLAND  
FLORIDA

Big Public Boat Ramp north of Fernandina Beach beside Fort Clinch State Park. The distant noise from the industry during daytime is not disturbing.

**GPS:** N 30°41'45", W 81°27'28"  
**Height:** 6 m  
**Quality:** \*\*\*  
**Rate:** --



22. TAG:  
DIENSTAG, 13.2.2018

FRANK BUTLER PARK WEST  
BOAT RAMP, ANASTASIA IS-  
LAND  
FLORIDA

Big Public Boat Ramp at Frank Butler Park West. The Sherriff patrolled the area just after our arrival at 5:30 but did not stop. If you leave St. Augustine on the crowded US-1 and SR-312 it is unbelievable to find such a quiet spot just 8 miles out of town.

**GPS:** N 29°47'16", W 81°16'02"  
**Height:** 1 m  
**Quality:** \*\*\*  
**Rate:** --



23. TAG:  
MITTWOCH, 14.2.2018

LAKE DELANCY NATIONAL  
RECREATION AREA, Ocala  
NATIONAL FOREST  
FLORIDA

Forest Service Campground in Ocala Natiaol Forest at Lake Delancy, but there is no access to the lake. Absolutely quiet and pieceful. Pit toilets, fire rings and picknick tables are available. It is perfect that the US Government was here before the Theme Parks!

**GPS:** N 29°25'46", W 81°47'10"  
**Height:** 11 m  
**Quality:** \*\*\*\*  
**Rate:** \$ 10



# Übernachtungsplätze 2018



24. TAG:  
DONNERSTAG, 15.2.2018

FOREST ROAD 10, OCALA NATIONAL FOREST  
FLORIDA

Bushcamping along Forest Road 10 in Ocala National Forest. Absolutely quiet.

**GPS:** N 29°15'06", W 81°41'37"  
**Height:** 21 m  
**Quality:** \*\*\*  
**Rate:** --



25. TAG:  
FREITAG, 16.2.2018

FOREST ROAD 37, OCALA NATIONAL FOREST  
FLORIDA

Bushcamping along Forest Road 37 in Ocala National Forest. It is better to have 4 WD because the dirt road has some sandy spots. In the evening a little noisy from military airplanes.

**GPS:** N 29°09'58", W 81°42'29"  
**Height:** 16 m  
**Quality:** \*\*\*  
**Rate:** --



26. TAG:  
SAMSTAG, 17.2.2018

PAISLEY ROAD, OCALA NATIONAL FOREST  
FLORIDA

Camping in the Forest 200 yards down a small and sandy spur road from Paisley Road in Ocala National Forest. Ok for one night overnight parking.

**GPS:** N 29°00'40", W 81°32'34"  
**Height:** 18 m  
**Quality:** \*\*  
**Rate:** --



# Übernachtungsplätze 2018



27. TAG:  
SONNTAG, 18.2.2018

BLUE SPRINGS PUBLIC BOAT  
RAMP  
FLORIDA

Beautiful spot at the Public Boat Ramp at  
St. Johns River near Blue Springs State Park  
with a nice sunset.

**GPS:** N 28°56'50", W 81°20'39"  
**Height:** 6 m  
**Quality:** \*\*\*  
**Rate:** --



28. TAG:  
MONTAG, 19.2.2018

DELTONA WALMART  
FLORIDA

Unfortunately at our second night the Park  
Ranger told us, it is not possible to stay  
here overnight. So we had to choose the  
next option at Walmart in Deltona.

**GPS:** N 28°53'53", W 81°18'14"  
**Height:** 12 m  
**Quality:** \*  
**Rate:** --



29. TAG:  
DIENSTAG, 20.2.2018

NEW SMYRNA BEACH NORTH  
CAUSEWAY PARK  
FLORIDA

Great place to stay for free directly at the  
Intracoastal Waterway. We saw dolphins.  
Little noise from the nearby North Cause-  
way.

**GPS:** N 29°01'57", W 80°54'51"  
**Height:** 4 m  
**Quality:** \*\*\*  
**Rate:** --



# Übernachtungsplätze 2018



30. TAG:  
MITTWOCH, 21.2.2018

WABASSO ISLAND  
FLORIDA

Not easy to find a place to stay overnight at Southern Floridas Coastline. All public beaches have parking restrictions, campgrounds are fully booked. Finally we parked on Wabasso Island under the bridge across the Intracoastal Waterway.

**GPS:** N 27°45'37", W 80°25'04"  
**Height:** 4 m  
**Quality:** \*  
**Rate:** --



31. TAG:  
DONNERSTAG, 22.2.2018

PICAYUNE STRAND STATE FOREST CAMPGROUND  
FLORIDA

Not very well advertised Campground in the Picayune Strand State Forest, just south of the Alligator Alley Highway (I-75). There is little distant noise from the Highway, but the setting is quite natural. Only 2 more Campers stayed with us.

**GPS:** N 26°08'35.5", W 81°33'38.5"  
**Height:** 6 m  
**Quality:** \*\*  
**Rate:** \$14



32. TAG:  
FREITAG, 23.2.2018

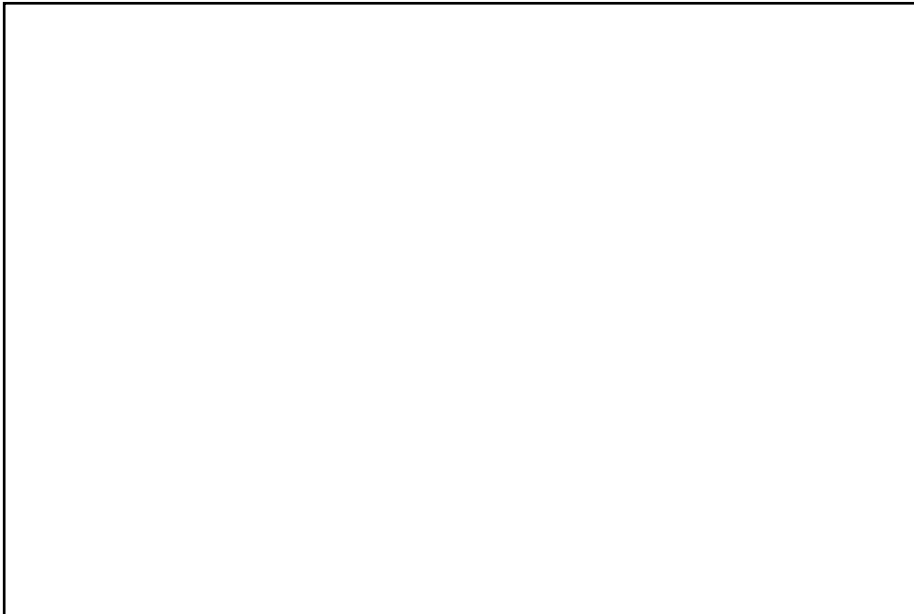
GOODLAND, BEI TERRENCE  
PRIVAT  
FLORIDA

Private camping in the nice and quiet little village of Goodland upon invitation from Terrence.

**GPS:** N 25°55'33", W 81°38'40"  
**Height:** 2 m  
**Quality:** \*\*  
**Rate:** --



# Übernachtungsplätze 2018



33. TAG:  
SAMSTAG, 24.2.2018

HARBOUR HEIGHTS PARK BOAT  
RAMP  
FLORIDA

Quiet boat ramp at Harbour Heights Park.  
At 9 PM the police patroulled the area,  
stopped, but said nothing.

**GPS:** N 26°59'26", W 81°59'44"  
**Height:** 2 m  
**Quality:** \*\*  
**Rate:** --



34. TAG:  
SONNTAG, 25.2.2018

MYAKKA RIVER STATE PARK,  
BIG FLAT CAMPGROUND  
FLORIDA

Nice State Park Campground, clean, sha-  
ded from Oaks. People are quiet but the  
restroom pumps are very noisy especially in  
the morning from 6.30 AM.

**GPS:** N 27°15'42", W 82°17'14"  
**Height:** 12 m  
**Quality:** \*\*  
**Rate:** \$29



35. TAG:  
MONTAG, 26.2.2018

SUNWEST PARK, ARIPEKA  
FLORIDA

Open area near SunWest Park south of  
Aripeka, which seems to be an old Mine.  
Quiet, some cars passed by in the evening,  
but very quiet during night. Many birds are  
singing in the morning.

**GPS:** N 28°24'21", W 82°40'11"  
**Height:** 4 m  
**Quality:** \*\*  
**Rate:** --



# Übernachtungsplätze 2018



36. TAG:  
DIENSTAG, 27.2.2018

WITHLACOOCHEE RIVER BOAT  
RAMP, DUNNELLON  
FLORIDA

Boat Ramp at the beautiful Withlacoochee River with a nice Sunset. There are some homes quite close but it is absolutely quiet.

**GPS:** N 29°02'25", W 82°30'08"  
**Height:** 2 m  
**Quality:** \*\*  
**Rate:** --



37. TAG:  
MITTWOCH, 28.2.2018

LOWER SUWANNEE RIVER  
BOAT RAMP  
FLORIDA

Beautiful spot at the Public Boat Ramp at the Lower Suwannee River just north of Manatee Springs State Park (Campground was full). Absolutely quiet. Unfortunately there is a Camping not allowed sign, but we are not bothered from the police.

**GPS:** N 29°31'02", W 82°58'15"  
**Height:** 6 m  
**Quality:** \*\*\*  
**Rate:** --



38. TAG:  
DONNERSTAG, 1.3.2018

ICHETUCKNEE SPRINGS  
CAMPGROUND  
FLORIDA

Nice and natural privat campground in the forest very close to the north entrance of Itchetucknee Springs State Park. The Campground appears more like a Forest Campground than a privately owned one. The sites are big and you have a good distance to your neighbour.

**GPS:** N 29°58'52", W 82°45'03"  
**Height:** 28 m  
**Quality:** \*\*\*  
**Rate:** \$16



# Übernachtungsplätze 2018



39. TAG:  
FREITAG, 2.3.2018

SUWANNEE RIVER RENDEZ-  
VOUS CAMPGROUND  
FLORIDA

Big RV Ressort with tent sites shaded from trees directly at the Suwannee River. Also the RV sites look ok, but they are away from the river and not in a natural setting.

**GPS:** N 30°05'12", W 83°05'39"  
**Height:** 26 m  
**Quality:** \*\*\*\*  
**Rate:** \$21,40



40. TAG:  
SAMSTAG, 3.3.2018

ST. MARKS RIVER BOAT RAMP  
FLORIDA

Public Boat Ramp in the little village of St. Marks at the St. Marks River. Toilets are available. Very nice view of the river and very nice sunset. On Saturday evening distant music from the Riverfront Pub in St. Marks.

**GPS:** N 30°09'06", W 84°12'34"  
**Height:** 6 m  
**Quality:** \*\*\*  
**Rate:** --



41. TAG:  
SONNTAG, 4.3.2018

ALLIGATOR POINT BEACH  
FLORIDA

Oceanfront camping at Alligator Point at an old public beach parking where a hurricane destroyed 500 yards of Beach in 2016. Dolphins passed by in the evening and in the morning. The Sheriff sent us away at 5 pm on our second evening at Alligator Point Beach because somebody called him and want us to move away. He would not care, but he has to do his job.

**GPS:** N 29°53'38", W 84°22'24"  
**Height:** 2 m  
**Quality:** \*\*\*\*  
**Rate:** --



# Übernachtungsplätze 2018



42. TAG:  
MONTAG, 5.3.2018

TATE'S HELL STATE FOREST,  
CROOKED RIVER TRACT  
FLORIDA

After beeing sent away from Alligator Point Beach we moved to Tate State Forest and choose a quiet side road in the Forest for the night.

**GPS:** N 29°02'25", W 82°30'08"  
**Height:** 4 m  
**Quality:** \*\*  
**Rate:** --



43. TAG:  
DIENSTAG, 6.3.2018

ST. JOSEPH PENINSULA STATE  
PARK CAMPGROUND  
FLORIDA

State Park Campground in the dunes shaded from pine trees. Ca 300 yards away from the white sandy beach. Unfortunately the area was burned short before our stay. So it was not a very nice and natural atmosphere. Showers and restrooms are ok.

**GPS:** N 29°46'51", W 85°24'23"  
**Height:** 2 m  
**Quality:** \*\*\*  
**Rate:** \$24



44. TAG:  
MITTWOCH, 7.3.2018

MORRISON SPRINGS PARK  
FLORIDA

Big Parking Lot at the Morrison Springs Park Boat Ramp. The Springs can be locked with a gate, but the parking lot for the boat ramp is outside the gate. The Spring is natural and beautiful with a temperature of 68°F. There is a swimming area with toilets.

**GPS:** N 30°39'25", W 85°54'24"  
**Height:** 24 m  
**Quality:** \*\*\*  
**Rate:** --



# Übernachtungsplätze 2018

---



45. TAG:  
DONNERSTAG, 8.3.2018

POINT WASHINGTON STATE  
FOREST  
FLORIDA

Boat Ramp at the beautiful Withlacoochee River with a nice Sunset. There are some homes quite close but it is absolutely quiet.

**GPS:** N 30°19'27", W 86°05'36"  
**Height:** 4 m  
**Quality:** \*\*\*  
**Rate:** --



46. TAG:  
FREITAG, 9.3.2018

BEACH PARKING GULF ISLAND  
NATIONAL SEASHORE  
FLORIDA

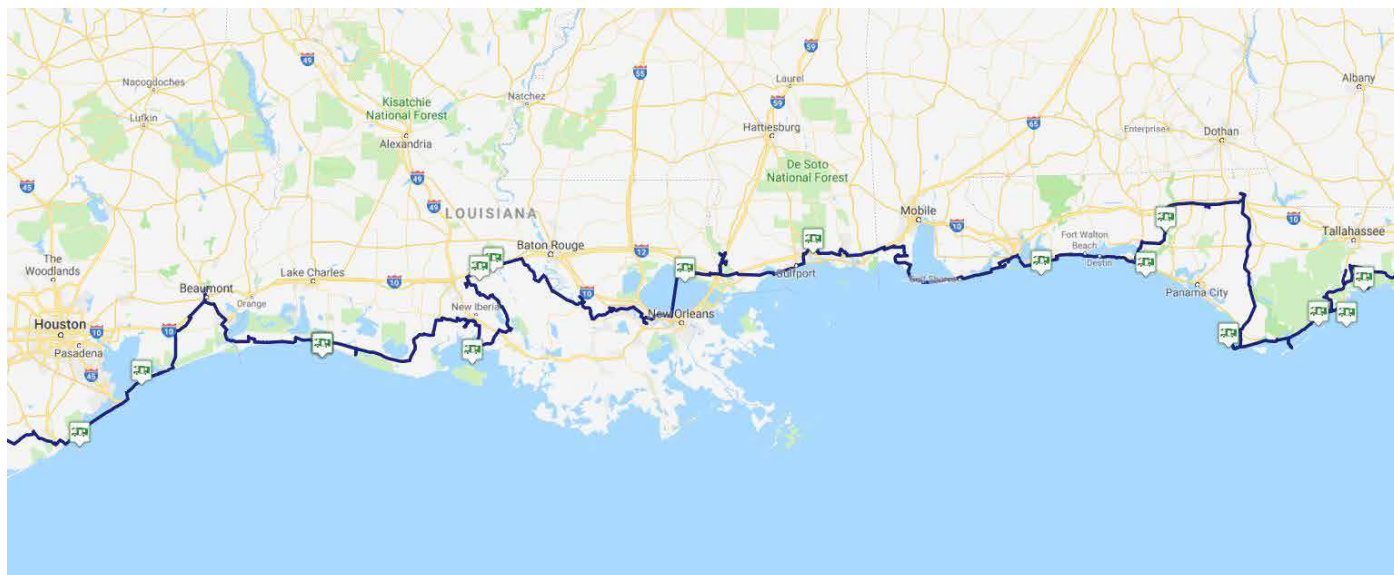
Parking lot of the Gulf Island National Seashore directly at the white beach with 180° oceanview. No sign for no camping or overnight parking. Because of the constant noise of the surf you cannot hear any noise from the cars on the nearby road. There are 4 more parking lots in the seashore.

**GPS:** N 30°21'33", W 86°59'30"  
**Height:** 4 m  
**Quality:** \*\*\*\*\*  
**Rate:** --



## ALABAMA - MISSISSIPPI - LOUISIANA

10.02.2018 BIS 17.03.2018



**Alabama:** 0,5 Tage - 143 km - 286 km pro Tag

**Mississippi:** 0,5 Tage - 193 km - 386 km pro Tag

**Louisiana:** 7 Tage - 1001 km - 143 km pro Tag



47. TAG:  
SAMSTAG, 10.3.2018

DE SOTO NATIONAL FOREST  
ALABAMA

Bushcamping along a forest road in De Soto National Forest. Distant noise from Hwy 15 but not disturbing. A lot of rubbish is all around in the National Forest.

GPS: N 30°33'07", W 88°56'36"  
Height: 36 m  
Quality: \*  
Rate: --

WWW.WILDE-WEITE-WELT.DE



# Übernachtungsplätze 2018



48. TAG:  
SONNTAG, 11.3.2018

FONTAINEBLEAU STATE PARK  
LOUISIANA

Quiet State Park Campground with Dry Camping and Full Hookup Sites. Laundry and Showers are available.

**GPS:** N 30°20'31", W 90°02'20"  
**Height:** 8 m  
**Quality:** \*\*\*  
**Rate:** \$ 25



49. TAG:  
MONTAG, 12.3.2018

ATCHAFALAYA NATIONAL WILD-  
LIFE REFUGE  
LOUISIANA

Parking Lot at the Entrance to Atchafalaya National Wildlife Refuge with a view across Little Alabama Bayou. Absolutely quiet on a dirt road leading into the swamps.

**GPS:** N 30°24'34", W 91°40'28"  
**Height:** 8 m  
**Quality:** \*\*\*  
**Rate:** --



50. TAG:  
DIENSTAG, 13.3.2018

ATCHAFALAYA BASIN, HENDER-  
SON LEEVEE ROAD  
LOUISIANA

Boat Ramp at North Henderson Levee Road. There are several more remote parking lots and boat ramps along the spillway to the north, but we are not sure if overnight parking is allowed.

**GPS:** N 30°20'39", W 91°47'16"  
**Height:** 7 m  
**Quality:** \*\*  
**Rate:** --



# Übernachtungsplätze 2018



51. TAG:  
MITTWOCH, 14.3.2018

CYPREMORT POINT BOAT  
RAMP  
LOUISIANA

Quiet State Park Campground with Dry  
Camping and Full Hookup Sites. Laundry  
and Showers are available.

**GPS:** N 29°43'53", W 91°50'33"  
**Height:** 2 m  
**Quality:** \*\*\*  
**Rate:** --



52.-54. TAG:  
DONNERSTAG, 15.3.2018 BIS  
SAMSTAG, 17.3.2018

RUTHERFORD BEACH  
LOUISIANA

Perfect quiet and peaceful oceanfront be-  
ach camping with the sound of the waves.  
There were 4 more campers along the half  
mile beach where you can camp. Cold sho-  
wers and picnic tables are available.

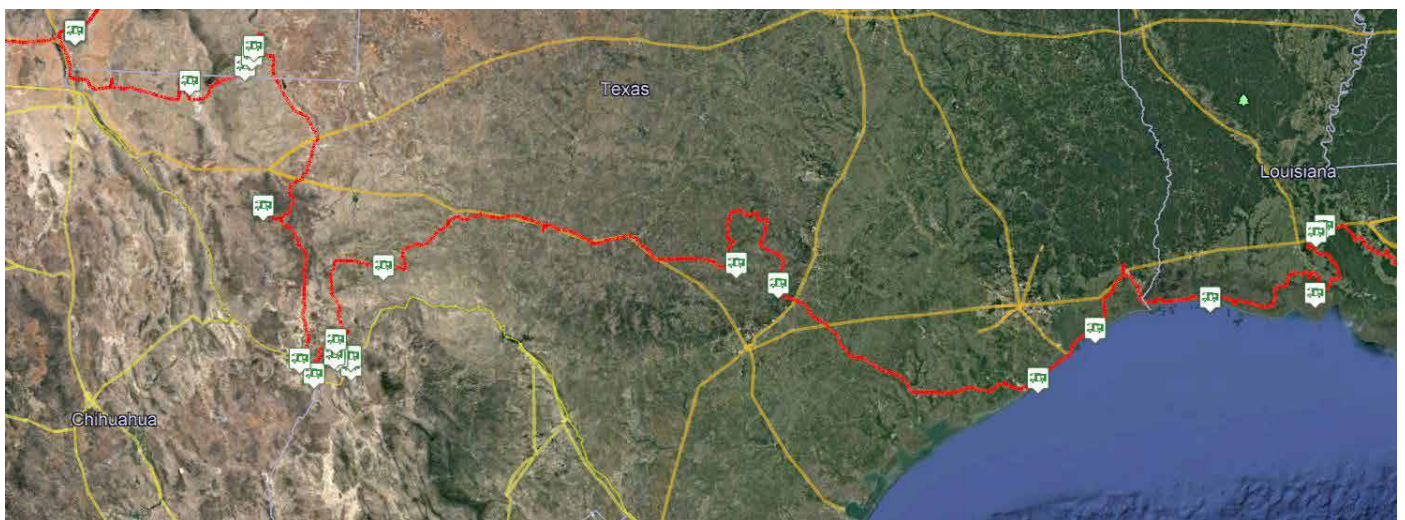
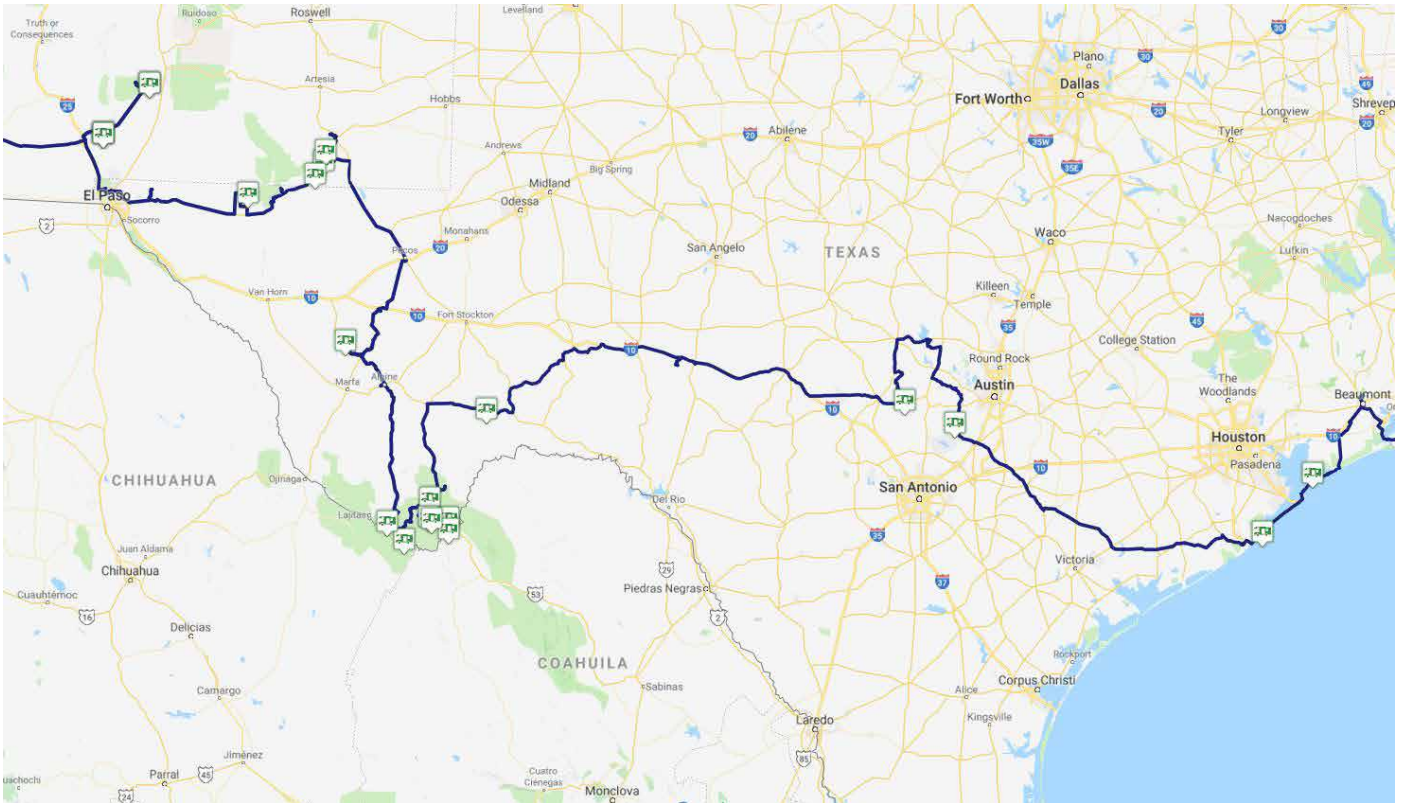
**GPS:** N 29°45'27", W 93°07'07"  
**Height:** 1 m  
**Quality:** \*\*\*\*\*  
**Rate:** --





## TEXAS

18.03.2018 BIS 31.03.2018



**Texas:** 15 Tage - 2935 km - 196 km pro Tag





55. TAG:  
SONNTAG, 18.3.2018

BOLIVAR BEACH AT ROLLOVER  
PASS  
TEXAS

Nice Camping at the beautiful clean sandy beach at the Bolivar Peninsula. There is a beach parking permit necessary, valid 1 year, \$10. During the day several day visitors are on the beach but it is far away to get crowded. In the night we had been alone. The nearby street is not disturbing because you sleep with the sound of the waves.

**GPS:** N 29°30'34", W 94°39'36"  
**Height:** 2 m  
**Quality:** \*\*\*\*\*  
**Rate:** --



56. TAG:  
MONTAG, 19.3.2018

FREEPORT BEACH  
TEXAS

The best beach for camping on this journey up to now. It is as nice as beach camping at Padre Island. Very clean, fine sand, smooth waves, very quiet. We had 3 miles of beach for us. Driving is no problem for a 2 WD vehicle.

**GPS:** N 29°02'07", W 95°10'27"  
**Height:** 1 m  
**Quality:** \*\*\*\*\*  
**Rate:** --





# Übernachtungsplätze 2018



57. TAG:  
DIENSTAG, 20.3.2018

FOREST NEAR JACOBS WELL  
TEXAS

Wild camping in a juniper forest. The area is prepared for building new homes but actually there are no houses. The parking spot is not seen from the road and only a small track is leading there. It is quiet. At 5 am the sheriff told us, that it is not possible to stay here over night.

**GPS:** N 30°02'12", W 98°07'53"  
**Height:** 300 m  
**Quality:** \*  
**Rate:** --



58. TAG:  
MITTWOCH, 21.3.2018

PEDERNALES RIVER ACROSS  
FROM LBJ RANCH  
TEXAS

Camping at the Pedernales River just behind a Rest Area and a small Church. On the other side of the River is the LBJ Ranch. The setting is nice but the major road from Fredricksburg to Johnson City is noisy.

**GPS:** N 30°14'17", W 98°36'33"  
**Height:** 413 m  
**Quality:** \*  
**Rate:** --



59. TAG:  
DONNERSTAG, 22.3.2018

DESERT BETWEEN SANDERSON  
AND MARATHON  
TEXAS

Place for overnight parking in the Desert at the railroad tracks just beside a watertank where the railroad leaves the highway. It is not easy to find a place here because both sides of the highway is fenced private land and you cannot move from the road. Expect some noise from trains, but there are not so many passing by (7). The highway is also a bit disturbing.

**GPS:** N 30°09'38", W 102°39'47"  
**Height:** 1051 m  
**Quality:** \*  
**Rate:** --





60. TAG:  
FREITAG, 23.3.2018

BIG BEND NP:  
GRAPEVINE HILLS No 4  
TEXAS

Primitive Backcountry Camping in Big Bend National Park. You need a backcountry permit which is \$ 12 for up to 14 nights. Grapevine Hills No 4 has a much nicer view of the Badlands to the North East than No 5, which is more secluded between shrubs. The dirtroad is 7.7 mi long and a bit rocky in places. It was no problem for our 4WD Truck but high clearance is an advantage.

**GPS:** N 29°24'27", W 103°11'31.5"  
**Height:** 951 m  
**Quality:** \*\*\*\*\*  
**Rate:** --



61. TAG:  
SAMSTAG, 24.3.2018

BIG BEND NP:  
PINE CANYON No 4  
TEXAS

Primitive Backcountry Camping in Big Bend National Park in Pine Canyon at site No. 4. You need a backcountry permit which is \$ 12 for up to 14 nights. It is a 5 mi bumpy dirtroad to the site, high clearance is recommended.

**GPS:** N 29°15'15.5", W 103°12'13"  
**Height:** 1262 m  
**Quality:** \*\*\*\*\*  
**Rate:** --







62. TAG:  
SONNTAG, 25.3.2018

BIG BEND NP: CAMP DE LEON  
TEXAS

Primitive Backcountry Camping in Big Bend National Park in Camp de Leon along Old Ore Road. You need a backcountry permit which is \$ 12 for up to 14 nights. Old Ore Road is a 4x4 Road but the approach to Camp de Leon is not worse than the other rocky backroads.

**GPS:** N 29°14'49", W 103°00'44"  
**Height:** 688 m  
**Quality:** \*\*\*\*\*  
**Rate:** --



63. TAG:  
MONTAG, 26.3.2018

BIG BEND NP:  
GRAVEL PIT NO 3  
TEXAS

Primitive Backcountry Camping in Big Bend National Park. You need a backcountry permit which is \$ 12 for up to 14 nights. Gravel Pit is easy accessible by a 2 WD car. You are just 200 yards from the Rio Grande where you can cool down.

**GPS:** N 29°09'08", W 103°00'12"  
**Height:** 578 m  
**Quality:** \*\*\*\*\*  
**Rate:** --





# Übernachtungsplätze 2018

---



64. TAG:  
DIENSTAG, 27.3.2018

BIG BEND NP:  
CAMP CHILICOTAL  
TEXAS

Primitive Backcountry Camping in Big Bend National Park. You need a backcountry permit which is \$ 12 for up to 14 nights. Camp Chilicotal has the best view in the Park! The road is very bumpy all way long.

<b>GPS:</b>	N 29°14'16", W 103°10'07"
<b>Height:</b>	992 m
<b>Quality:</b>	*****
<b>Rate:</b>	--





# Übernachtungsplätze 2018



65. TAG:  
MITTWOCH, 28.3.2018

BIG BEND NP: BLACK DIKE  
TEXAS

Primitive Backcountry Camping in Big Bend National Park. There is a lot of vegetation around Black Dike and you don't have a nice view. There is a trail to the Rio Grande with a nice Basalt formation where you can swim. Just above the Dike is a nice viewpoint. The first 6 mi of the River Road East are fine but then it gets very rough in some spots.

GPS:	N 29°03'20", W 103°26'00"
Height:	638 m
Quality:	****
Rate:	--



66. TAG:  
DONNERSTAG, 29.3.2018

BIG BEND NP:  
TERLINGUA ABAJO No 3  
TEXAS

Primitive Backcountry Camping in Big Bend National Park. You need a backcountry permit which is \$ 12 for up to 14 nights. There are 3 Sites at Terlingua Abajo, all of them with a nice view to Santa Elena Canyon. The Dirtroad is in good condition until Ocotillo Grove, then it is getting a bit rough through a small canyon.

GPS:	N 29°11'57", W 103°36'14"
Height:	664 m
Quality:	*****
Rate:	--



# Übernachtungsplätze 2018



67. TAG:  
FREITAG, 30.3.2018

DAVIS MOUNTAINS: MADERA  
CANYON PICNIC AREA  
TEXAS

Big Picnic Area in the Davis Mountains. There are 5 picnic sites with lot of space around. The area is shaded from Juniper and Pine trees. The nearby road is not used frequently. So it is very quiet.

**GPS:** N 30°42'22", W 104°03'21"  
**Height:** 1778 m  
**Quality:** \*\*\*  
**Rate:** --



68. TAG:  
SAMSTAG, 31.3.2018

ON BLM LAND NORTH OF  
CARLSBAD CAVERNS  
NEW MEXICO

Camping on BLM Land north of Carlsbad Caverns Nationalpark. The dirt road is very rough and you'll need a high clearance vehicle. There are several camping spots along the road. So you can go as far up the hill as you want until you are far enough away from the highway.

**GPS:** N 32°12'24", W 104°20'14"  
**Height:** 1149 m  
**Quality:** \*\*\*\*  
**Rate:** --





# Übernachtungsplätze 2018



69. TAG:  
SONNTAG, 1.4.2018

BLM LAND AT DARK CANYON  
ROAD  
NEW MEXICO

Camping on BLM Land north of Carlsbad Caverns Nationalpark. Several spur roads turn off from Dark Canyon Road. There were some more Campers around. The place is more quiet than along the National Park Highway, but the view is not as nice.

**GPS:** N 32°17'47", W 104°19'17"  
**Height:** 1071 m  
**Quality:** \*\*\*  
**Rate:** --



70. TAG:  
MONTAG, 2.4.2018

BLM LAND ALONG HWY 180  
BELOW CARLSBAD CAVERNS  
NEW MEXICO

Camping on BLM Land just below Carlsbad Caverns Nationalpark. A dirt road turn off to the East from National Park Highway 180 100 yards south of Rattlesnake Springs junction. There are at least 10 campsites along the road and some more Campers around even in Big Rigs. The place is very private and quiet if you drive far enough down the 2 WD dirt road.

**GPS:** N 32°05'35", W 104°24'55"  
**Height:** 1116 m  
**Quality:** \*  
**Rate:** --



71. TAG:  
DIENSTAG, 3.4.2018

WILLIAMS ROAD TO GYPSUM  
DUNES, DELL CITY  
TEXAS

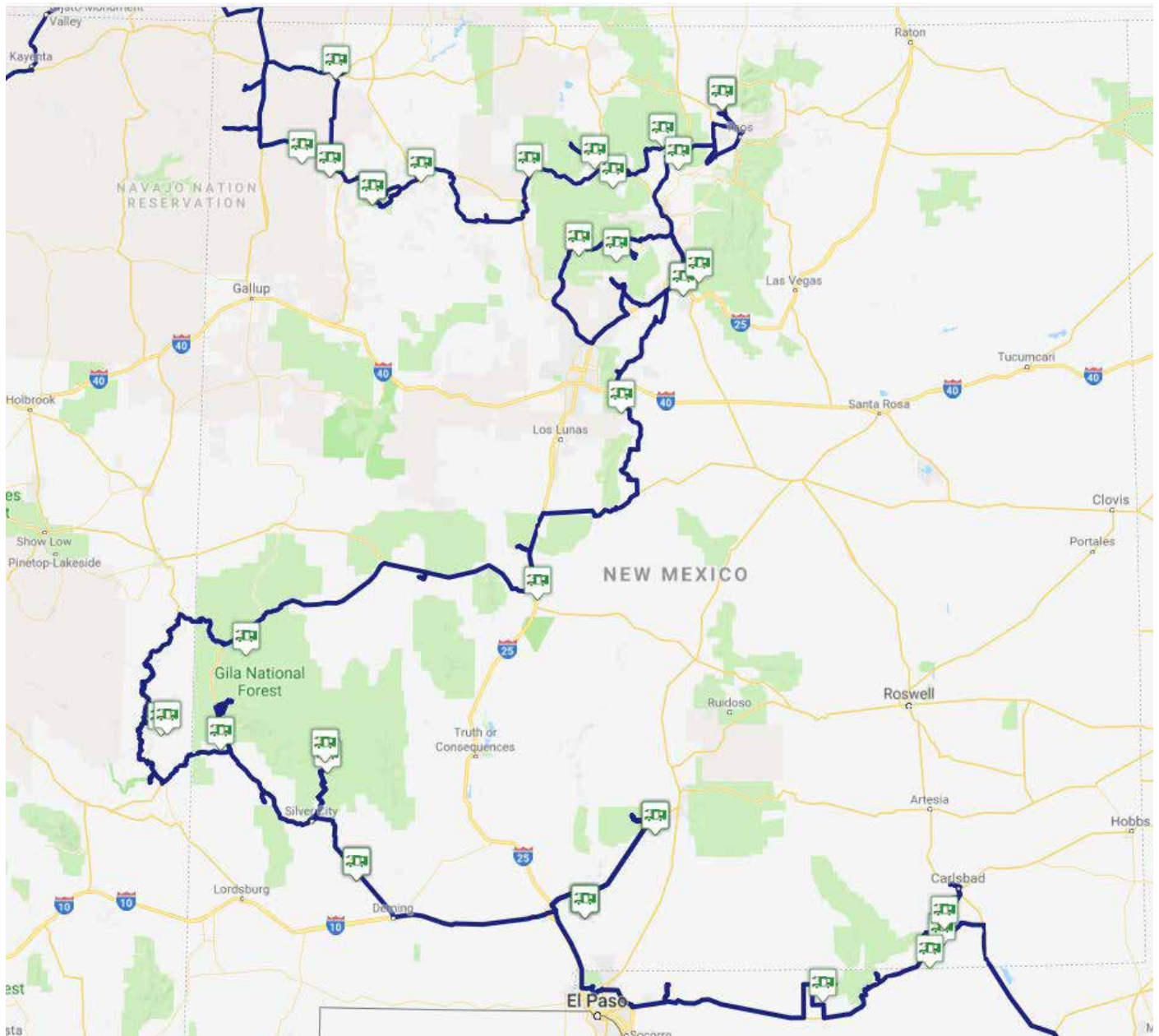
Wild Camping in the desert along Wilson Road leading to the Gypsum Dunes of Guadalupe Mountains National Park. Absolutely quiet with a nice view of the mountains.

**GPS:** N 31°55'16", W 105°04'46"  
**Height:** 1066 m  
**Quality:** \*\*\*  
**Rate:** --



# NEW MEXICO

01.04.2018 BIS 08.05.2018



**New Mexico:** 35 Tage - 3610 km - 103 km pro Tag



# Übernachtungsplätze 2018



72. BIS 74. TAG:  
MITTWOCH, 4.4.2018 BIS  
FREITAG, 6.4.2018

AGUIRRE SPRINGS CAMPG-  
ROUND, ORGAN MOUNTAINS  
NATIONAL MONUMENT  
NEW MEXICO

Primitive Campground with pit toilets,  
picnic tables and shelters in a spectacular  
setting with a great view in Organ Moun-  
tains National Monument. Pine Canyon trail  
starting from the campground offers great  
views and diverse vegetation.

<b>GPS:</b>	N 32°22'09", W 106°33'42"
<b>Height:</b>	1747 m
<b>Quality:</b>	****
<b>Rate:</b>	\$ 7



75. BIS 76. TAG:  
SAMSTAG, 7.4.2018 BIS  
SONNTAG, 8.4.2018

HOLLOMAN LAKE NEAR WHITE  
SANDS NATIONAL MONUMENT  
NEW MEXICO

Free Camping at Holloman Lake near White  
Sands National Monument. This is a big  
area with many places at a salty lake. The  
highway didn't disturb us.

<b>GPS:</b>	N 32°48'41", W 106°07'19"
<b>Height:</b>	1240 m
<b>Quality:</b>	****
<b>Rate:</b>	--



# Übernachtungsplätze 2018



77. BIS 78. TAG:  
MONTAG, 9.4.2018 BIS  
DIENSTAG, 10.4.2018

FAYWOOD HOT SPRINGS

NEW MEXICO

Small and quiet Campground with Full Hookup (\$ 38) and Dry Camping Sites (\$ 31). The best is the use of the 6 day use hot pools (96-110°F) and 3 hot pools for overnight guests (96-110°F).

**GPS:** N 32°33'17", W 107°59'37"  
**Height:** 1530 m  
**Quality:** \*\*\*\*  
**Rate:** \$ 31 (inkl Hot Pools)



79. TAG:  
MITTWOCH, 11.4.2018

MILITARY ROAD TRAILHEAD,  
GILA NATIONAL FOREST  
NEW MEXICO

Wild Camping in Gila National Forest along Spirit of the Mountains Scenic Byway before going down into the valley of the Gila River. Nice views of the Gila Wilderness. Absolutely quiet.

**GPS:** N 33°07'12", W 108°11'20"  
**Height:** 2258 m  
**Quality:** \*\*\*  
**Rate:** --



80. TAG:  
DONNERSTAG, 12.4.2018

GRAPEVINE CAMPGROUND,  
GILA NATIONAL FOREST  
NEW MEXICO

Forest Service Campground in Gila National Forest directly at the Gila River. Quiet and peaceful.

**GPS:** N 33°10'46", W 108°12'16"  
**Height:** 1759 m  
**Quality:** \*\*\*\*  
**Rate:** --





81. TAG:  
FREITAG, 13.4.2018

SAN FRANCISCO HOT SPRINGS  
TRAILHEAD, GILA NATIONAL  
FOREST  
NEW MEXICO

Dispersed Campsites with fire rings at the trailhead to San Francisco Hot Springs. The trail is 6,4 km long and heads south west down to the San Francisco River where several pools are built right at the river ranging from 95 to 102°F.

**GPS:** N 33°13'39", W 108°51'57"  
**Height:** 1510 m  
**Quality:** \*\*\*\*  
**Rate:** --



82. TAG:  
SAMSTAG, 14.4.2018

JUAN MILLER ROAD, APA-  
CHE-SITGREAVES NATIONAL  
FOREST  
ARIZONA

One of many absolutely great Campsites at Juan Miller Road leading to Blue Creek in the Apache-Sitgreaves National Forest. Great view, absolutely remote and quiet.

**GPS:** N 33°17'47", W 109°14'39"  
**Height:** 1453m  
**Quality:** \*\*\*\*  
**Rate:** --





# Übernachtungsplätze 2018



83. TAG:  
SONNTAG, 15.4.2018

XXX RANCH ROAD, APA-  
CHE-SITGREAVES NATIONAL  
FOREST  
ARIZONA

2 WD Trailhead to Blue River Canyon and  
Hannah Hot Spring. We came back from our  
dayhike to the Hannah Hot Spring (24,2 km  
+ 9,4 km along the Jeep Road) at 8 pm, so  
we didn't move the car anymore.

**GPS:** N 33°18'02", W 109°12'24"  
**Height:** 1354 m  
**Quality:** \*\*\*  
**Rate:** --



84. TAG:  
MONTAG, 16.4.2018

EAGLE PEAK ROAD, GILA NATI-  
ONAL FOREST  
NEW MEXICO

Wild Camping in Gila National Forest at  
Eagle Peak Road near Reserve. Absolutely  
quiet. Great view.

**GPS:** N 33°43'52", W 108°43'10"  
**Height:** 1866 m  
**Quality:** \*\*\*\*\*  
**Rate:** --



85. TAG:  
DIENSTAG, 17.4.2018

SOCORRO AM RIO GRANDE  
NEW MEXICO

Along the dam of the Rio Grande in Socorro  
are a couple of quiet sites. We moved a  
bit south from the main entrance at Otero  
Avenue to be more private.

**GPS:** N 34°02'59", W 106°52'08"  
**Height:** 1407 m  
**Quality:** \*\*\*  
**Rate:** --



# Übernachtungsplätze 2018



86. TAG:  
MITTWOCH, 18.4.2018

SABINO CANYON TRAILHEAD,  
CIBOLLA NATIONAL FOREST  
NEW MEXICO

Wild Camping at Sabino Canyon Trailhead in Cibolla National Forest. Quiet. There are a shaded picnic table and trash cans available. Forest Road 252 uphill leads you to some more overnight spots.

**GPS:** N 35°02'24", W 106°20'38"  
**Height:** 2176 m  
**Quality:** \*\*\*  
**Rate:** --



87. TAG:  
DONNERSTAG, 19.4.2018

AMERICAN SPRING ROAD,  
SANTA FE NATIONAL FOREST  
NEW MEXICO

Wild Camping in Santa Fe National Forest along Jemez Mountain Road. There are many dispersed camping spots at the Main Road in the Pine Forest. We drove up the rocky but 2 WD American Spring Road to have a better view and more distance to Jemez Mountain Road.

**GPS:** N 35°50'09", W 106°22'51"  
**Height:** 2508 m  
**Quality:** \*\*\*\*  
**Rate:** --



88. TAG:  
FREITAG, 20.4.2018

REDONDO HORSE STAGING  
AREA, VALLES CALDERA NATU-  
RAL PRESERVE  
NEW MEXICO

Bushcamping along the spur road to Redondo Horse Staging Area in front of the locked gate. Free and quiet.

**GPS:** N 35°52'23", W 106°37'19"  
**Height:** 2382 m  
**Quality:** \*\*\*  
**Rate:** --



# Übernachtungsplätze 2018



89. UND 90. TAG:  
SAMSTAG, 21.4.2018 UND  
SONNTAG, 22.4.2018

ST. VINCENT HOSPITAL,  
SANTA FE  
NEW MEXICO

Free Parking at St. Vincent Hospital because of Petras accident. Relatively quiet.

**GPS:** N 35°39'31", W 105°56'49"  
**Height:** 2083 m  
**Quality:** \*  
**Rate:** --



91. TAG:  
MONTAG, 23.4.2018

BLACK CANYON CAMPGROUND,  
SANTA FE NATIONAL FOREST  
NEW MEXICO

Overnight Parking at the Black Canyon Trail-head because the adjacent campground was closed. Close to the Road to Santa Fe Ski Area, but there is no traffic at night.

**GPS:** N 35°43'41", W 105°50'22"  
**Height:** 2447 m  
**Quality:** \*\*  
**Rate:** --



92. TAG:  
DIENSTAG, 24.4.2018

ALONG NM 111 IN CARSON  
NATIONAL FOREST  
NEW MEXICO

Boondocking along NM 111 in Carson National Forest. There is space for 3 campers shaded from Pine Trees near Rio Vallecitos. You are close to the road but it is few traffic and there is a constant noise from the river.

**GPS:** N 36°27'05", W 106°04'35"  
**Height:** 2138 m  
**Quality:** \*\*  
**Rate:** --



# Übernachtungsplätze 2018



93. TAG:  
MITTWOCH, 25.4.2018

FOREST ROAD 558,  
CARSON NATIONAL FOREST  
NEW MEXICO

Overnight Parking at Forest Road 558 in Carson National Forest. It would be a nice place with a great view but there is a lot of rubbish around.

**GPS:** N 36°19'39", W 105°58'31"  
**Height:** 2040 m  
**Quality:** \*\*  
**Rate:** --



94. UND 95. TAG:  
DONNERSTAG, 26.4.2018 UND  
FREITAG, 27.4.2018

CEBOLLA MESA,  
CARSON NATIONAL FOREST  
NEW MEXICO

Small Campground on Cebolla Mesa with pit toilets and picnic tables directly at the Rio Grande Gorge. Nobody was there, very quiet. The 3 mile dirtroad is fine. There is a 1.25 mile trail down in the canyon to the Rio Grande.

**GPS:** N 36°38'26", W 105°41'21"  
**Height:** 2267 m  
**Quality:** \*\*\*\*  
**Rate:** --





# Übernachtungsplätze 2018



96. TAG:  
SAMSTAG, 28.4.2018

RIO CHAMA UNTERHALB DES  
LAKE ABIQUIU  
NEW MEXICO

Perfect camping at the banks of the Rio Chama below the Abiquiu Lake dam close to a waterfall. Very quiet, very remote. The river road is bumpy but ok for 2 WD.

<b>GPS:</b>	N 36°13'49", W 106°24'01"
<b>Height:</b>	1839 m
<b>Quality:</b>	*****
<b>Rate:</b>	--



WWW.WILDE-WEITE-WELT.DE







97. TAG:  
SONNTAG, 29.4.2018

MONASTERY ROAD TO RIO  
CHAMA, CARSON NATIONAL  
FOREST  
NEW MEXICO

Wild Camping along Monastery Road  
leading to Rio Chama in Carson National  
Forest with a stunning view to the colorful  
rocks around Ghost Ranch. Perfect sunset  
location.

<b>GPS:</b>	N 36°19'58", W 106°31'17"
<b>Height:</b>	2023 m
<b>Quality:</b>	*****
<b>Rate:</b>	--







98. TAG:  
MONTAG, 30.4.2018

SAN JOSE BADLANDS  
NEW MEXICO

Nice and quiet camping at the beautiful San Jose Badlands

**GPS:** N 36°17'04", W 106°57'03"  
**Height:** 2265 m  
**Quality:** \*\*\*\*  
**Rate:** –







99. TAG:  
DIENSTAG, 1.5.2018

BLANCO WASH BADLANDS  
NEW MEXICO

Overnight parking at a small pulloff from the rocky dirtroad leading to several oil drilling stations with a great 180° view of the badlands east of Nageezi.

<b>GPS:</b>	N 36°15'16", W 107°39'46"
<b>Height:</b>	2128 m
<b>Quality:</b>	****
<b>Rate:</b>	--



100. UND 101. TAG:  
MITTWOCH, 2.5.2018 UND  
DONNERSTAG, 3.5.2018

SPUR ROAD TO VALLEY OF  
DREAMS  
NEW MEXICO

Overnight parking on BLM Land along the spur road to Valley of Dreams. The area is wide and open with a great view across the San Jose Basin.

<b>GPS:</b>	N 36°07'31", W 107°58'29"
<b>Height:</b>	1983 m
<b>Quality:</b>	****
<b>Rate:</b>	--





# Übernachtungsplätze 2018



102. BIS 103. TAG:  
FREITAG, 4.5.2018 BIS  
SAMSTAG, 5.5.2018

BISTI WILDERNESS  
NEW MEXICO

Camping in the beautiful Bisti Badlands at the end of the road ca 1 mile past the two parking lots for Bisti Wilderness. Nice view, quiet. You can camp at the Bisti Trailhead but there will be a lot more campers.

**GPS:** N 36°16'11", W 108°15'26"  
**Height:** 1659 m  
**Quality:** \*\*\*\*  
**Rate:** --



104. TAG:  
SONNTAG, 6.5.2018

LA PLATA BADLANDS  
NEW MEXICO

Free Camping at La Plata Badlands north of Farmington near Jackson Lake Wildlife Management Area. The Dirtroad leads to several Oil and Gas Stations and is in good shape. The place is surrounded by badlands and would be nice, but there is quite a lot rubbish around.

**GPS:** N 36°47'43", W 108°14'05"  
**Height:** 1601 m  
**Quality:** \*\*\*  
**Rate:** --



# Übernachtungsplätze 2018



105. TAG:  
MONTAG, 7.5.2018

BURNHAM BADLANDS  
NEW MEXICO

Wild Camping on Navajo Tribal Land along Indian Service Road 5080 at the Trailhead to Burnham Badlands. The view across the badlands to Shiprock is absolutely gorgeous but wild camping on Indian Reservations is always a bit tricky.

**GPS:** N 36°20'15", W 108°26'49"  
**Height:** 1746 m  
**Quality:** \*\*\*\*  
**Rate:** --



106. TAG:  
DIENSTAG, 8.5.2018

RECAPTURE POCKET  
UTAH

Perfect Camping at the beautiful Recapture Pocket. There are plenty of great hoodoos and rock formations around. It is really surprising not to find this great place mentioned more in the web or in travel books. The dirtroad is fine for 2 WD. Very quiet.

**GPS:** N 37°19'00", W 109°28'22"  
**Height:** 1401 m  
**Quality:** \*\*\*\*\*  
**Rate:** --







107. TAG:  
MITTWOCH, 9.5..2018

BUTLER WASH, PEDESTAL RU-  
INS TRAILHEAD  
UTAH

Wild Camping at the trailhead to Pedestal Rock Ruins overlooking Butler Wash and the Comb Ridge. The view is absolutely gorgeous. The sandy sidetrack from Butler Wash Road up the steep hill requires 4 WD.

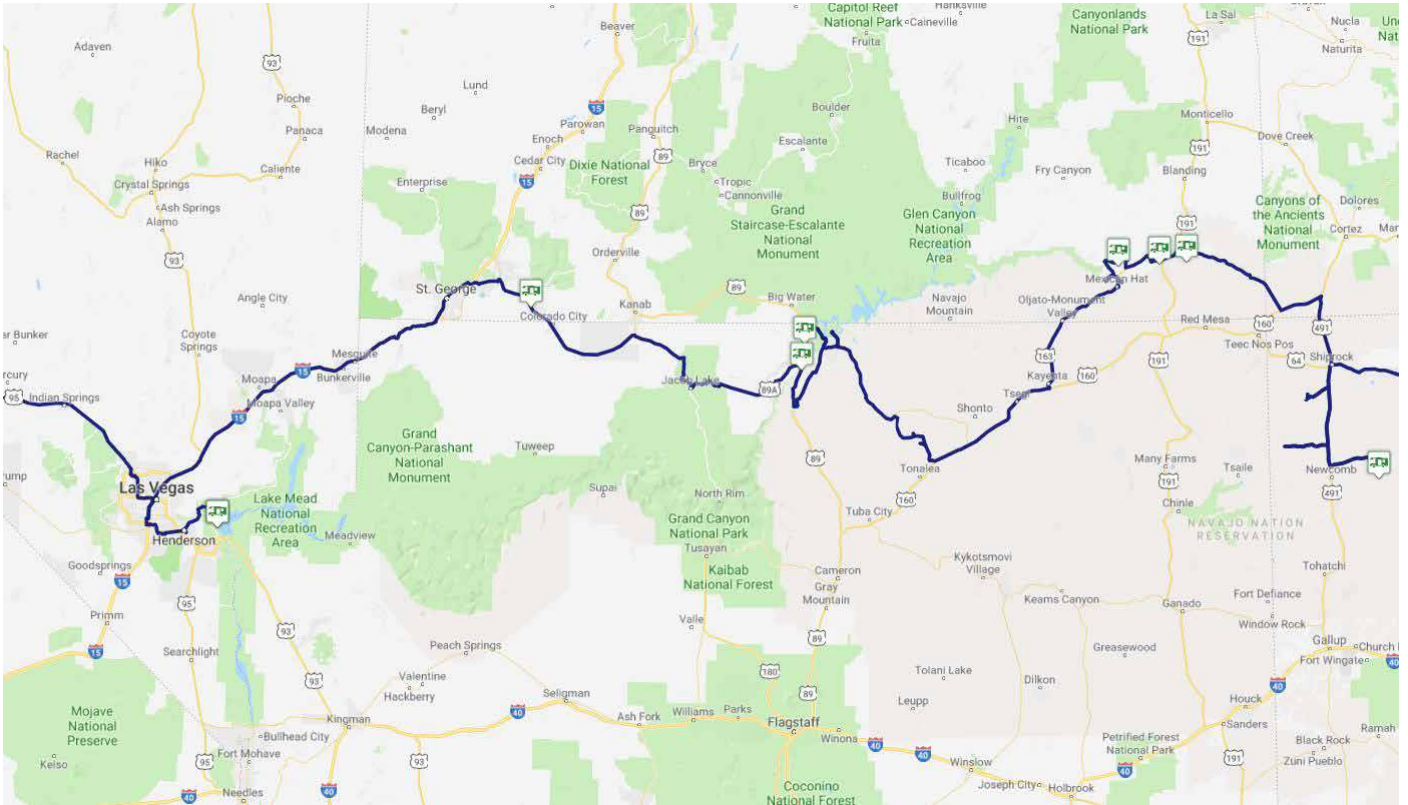
GPS: N 37°18'44", W 109°37'28"  
Height: 1441 m  
Quality: \*\*\*\*\*  
Rate: --





## UTAH, ARIZONA, NEVADA

08.05.2018 BIS 16.05.2018



**Utah:** 2 Tage - 388 km - 194 km pro Tag  
**Arizona:** 5 Tage - 877 km, 175 km pro Tag  
**Nevada:** 2 Tage, 275 km, 137 km pro Tag





108. TAG:  
DONNERSTAG, 10.5.2018

VALLEY OF THE GODS

UTAH

Wild Camping in the Valley of the Gods.  
There are plenty of great spots along the dirtroad. Great views, great scenery, great sunset, great stars, very quiet.

<b>GPS:</b>	N 37°18'27", W 109°51'13"
<b>Height:</b>	1518 m
<b>Quality:</b>	*****
<b>Rate:</b>	--





# Übernachtungsplätze 2018



109. TAG:  
FREITAG, 11.5.2018

BISHOP TANK AT THE ROAD TO  
STUD HORSE POINT

ARIZONA

Camping along the road to Stud Horse Point with a great view over Lake Powell and far enough away from the Highway 89 to be really quiet. There are more spots to camp further up the road and also at Stud Horse Point itself with a gorgeous view and great hoodoos. You will need 4 WD to reach Stud Horse Point but to this place 2 WD is fine.

**GPS:** N 36°58'26", W 111°35'37"  
**Height:** 1435 m  
**Quality:** \*\*\*\*  
**Rate:** --



110. TAG:  
SAMSTAG, 12.5.2018

LEES FERRY CAMPGROUND

ARIZONA

Campground in the Glen Canyon National Recreation Area with flush toilets, some sites with picnic tables. Nice setting but the sites are not very big and if the campground is full and there are kids around it is getting a bit noisy in the evening.

**GPS:** N 36°51'33", W 111°36'20"  
**Height:** 974 m  
**Quality:** \*\*  
**Rate:** \$ 20



111. TAG:  
SONNTAG, 13.5.2018

SMITHSONIAN BUTTE ROAD

UTAH

Great place close to Smithsonian Butte to stay for free and very quiet with a great view to the mountains of Zion National Park and Pinedale Mountains. The Smithsonian Butte Backcountry Byway is fine from Apple Valley but rough in spots coming from Springdale.

**GPS:** N 37°07'41", W 113°06'07"  
**Height:** 1461 m  
**Quality:** \*\*\*\*  
**Rate:** --





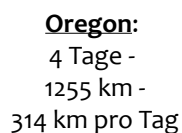
112. -113.TAG:  
MONTAG, 14.5.2018 UND  
DIENSTAG, 15.5.2018

BOXCAR COVE, LAKE MEAD NA-  
TIONAL RECREATION AREA  
NEVADA

Many nice places to camp without shade at Lake Mead. There is swimming access. It's amazing to find such spots for free close to a big city like Las Vegas.

<b>GPS:</b>	N 36°07'11", W 114°47'59"
<b>Height:</b>	346 m
<b>Quality:</b>	****
<b>Rate:</b>	--







# Übernachtungsplätze 2018



114. TAG:  
SONNTAG, 8.7.2018

BIG DUNE ROAD  
NEVADA

Camping in the desert along the Road to Big Dune in the Amargosa Valley. No shade, very hot, 42°C at 8 PM, 36°C at 1 AM, 32 at 6 AM.

<b>GPS:</b>	N 36°39'37", W 116°37'01"
<b>Height:</b>	779 m
<b>Quality:</b>	***
<b>Rate:</b>	--



115. TAG:  
MONTAG, 9.7.2018

DYKE HOT SPRING  
NEVADA

Camping at Dyke Hot Spring with a great view of the Quinn River Valley. There are bathtubs in a ravine of the hot spring to soak in.

<b>GPS:</b>	N 41°34'02", W 118°33'58"
<b>Height:</b>	1253 m
<b>Quality:</b>	*****
<b>Rate:</b>	--







116. TAG:  
DIENSTAG, 10.7.2018

## SOUTH HARNEY LAKE HOT SPRING

OREGON

Great Camping with a great view in absolutely solitude at South Harney Lake Hot Spring which has 3 pool along the ditch where the water is cold enough to soak. A 8 miles dirtroad leads to the hot spring along the southern end of Mud Lake and South Harney Lake. The road is partly rotted with deep potholes and only passable when dry.

<b>GPS:</b>	N 43°10'52", W 119°03'28"
<b>Height:</b>	1258 m
<b>Quality:</b>	*****
<b>Rate:</b>	--





# Übernachtungsplätze 2018



117. TAG:  
MITTWOCH, 11.7.2018

JOHN DAY RIVER NEAR CLARNO  
UNIT  
OREGON

There are some nice camping spots along the John Day River in the great scenery near the Clarno Unit of John Day Fossil National Monument. Swimming in the river is possible, very quiet, only the sound of nature.

**GPS:** N 44°55'45", W 120°28'38"  
**Height:** 396 m  
**Quality:** \*\*\*  
**Rate:** --



118. TAG:  
DONNERSTAG, 12.7.2018

LOLO PASS ROAD, PACIFIC  
CREST TRAILHEAD, MT. HOOD  
NF  
OREGON

Overnight Parking in Mt. Hood National Forest at the Pacific Crest Trailhead located at Lolo Pass, which is ok for one night. To the north Lolo Pass Road is heavily washed out. Within 100 ft walking you have a nice view of Mt. Hood. Many more camping spots are on the way to Ramona Falls trailhead.

**GPS:** N 45°25'38", W 121°47'46"  
**Height:** 1009 m  
**Quality:** \*\*  
**Rate:** --



119. TAG:  
FREITAG, 13.7.2018

LARCH MOUNTAIN ROAD, MT.  
HOOD NF  
OREGON

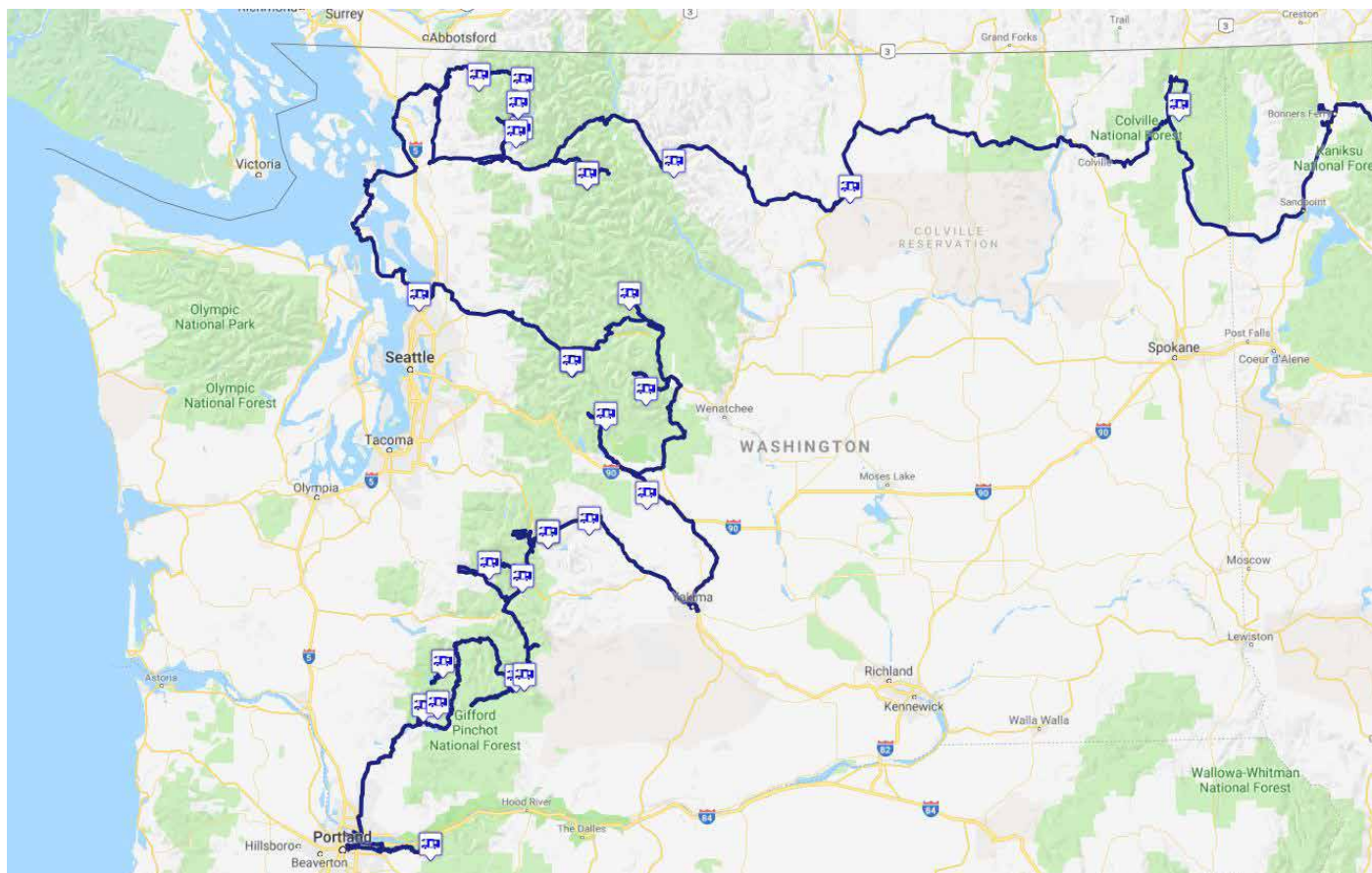
Big Turn Around area 4 miles before the end of the Larch Mountain Road which is closed here since the big fire in the Columbia River Gorge in Summer 2017. No problem to camp here in the Mt. Hood National Forest, but the place is located in the forest without any beautiful view, but the closest place to Portland in the nature.

**GPS:** N 45°32'24", W 122°07'02"  
**Height:** 821 m  
**Quality:** \*\*  
**Rate:** --



## WASHINGTON

14.07.2018 BIS 10.08.2018



**Washington:** 27,5 Tage - 3113 km - 113 km pro Tag



# Übernachtungsplätze 2018



120. TAG:  
SAMSTAG, 14.7.2018

ROAD TO CLIMBERS BIVOUAC,  
MT. ST. HELENS NM  
WASHINGTON

Dispersed camping along the road to Climbers Bivouac, a big parking lot in Mt. St. Helens National Monument. Along the road are nice views to Mt. St. Helens. The place itself is in the forest, but within walking distance is a nice sunset location with a view to Mt. Hood in the southwest.

**GPS:** N 46°08'36", W 122°11'01"  
**Height:** 1097 m  
**Quality:** \*\*\*  
**Rate:** --



121. TAG:  
SONNTAG, 15.7.2018

LAHAR VIEWPOINT, MT. ST. HELENS NM  
WASHINGTON

Overnight Parking in Mt. St. Helens National Monument at the Lahar Viewpoint which is 100 m away from the road to Lava Canyon Trailhead and has a gorgeous view of Mt. St. Helens. Although we were there in on a Sunday in July this parking lot is not crowded and we were the only car there most of the day while the other parking lots get filled up until noon. There are many dispersed Campsites along the Lava Canyon Road but all of them are deep in the forest without any view but therefore well shaded. Lahar viewpoint has definitely the best roadside view of the mountain in the area.

**GPS:** N 46°09'34", W 122°05'43"  
**Height:** 892 m  
**Quality:** \*\*\*\*\*  
**Rate:** --





# Übernachtungsplätze 2018



122. TAG:  
MONTAG, 16.7.2018

FR 26 ABOVE GREEN RIVER,  
MT. ST. HELENS NM  
WASHINGTON

Great place only surrounded by nature along FR 26 which is closed 3 miles ahead because of a washout, so nobody will pass by. Nice view of the Green River Valley. Very quiet.

<b>GPS:</b>	N 46°20'10", W 122°04'04"
<b>Height:</b>	1104 m
<b>Quality:</b>	****
<b>Rate:</b>	--



123. TAG:  
DIENSAG, 17.7.2018

TAKHLAKH LAKE, GIFFORD PIN-  
CHOT NF  
WASHINGTON

Overnight parking in the forest near Takhlakh Lake. At Takhlakh Lake you have the best view of Mt. Adams at sunset. There is a nice forest service campground (\$18) but we decided to move in the forest after sunset because several generator were running and many kids playing.

<b>GPS:</b>	N 46°17'05", W 121°36'12"
<b>Height:</b>	1255 m
<b>Quality:</b>	**
<b>Rate:</b>	--





# Übernachtungsplätze 2018



124. TAG:  
MITTWOCH, 18.7.2018

KILLEN CREEK TRAILHEAD, GIFFORD PINCHOT NF  
WASHINGTON

Overnight parking at the Killen Creek Trailhead. There is not much traffic on the bumpy dirt road, so it is quiet. Along the forest road are many more sites for camping and Killen Creek Campground is close by.

**GPS:** N 46°17'19", W 121°33'08"  
**Height:** 1350 m  
**Quality:** \*\*\*  
**Rate:** --



125. TAG:  
DONNERSTAG, 19.7.2018

COUGAR ROCK CAMPGROUND  
SITE B12, MT. RAINIER NP  
WASHINGTON

National Park Service Campground in Mt. Rainier National Park in the Nisqually River Valley. Forested area, sites are quite small, but private and quiet. Campground was full when we came back from Skyline Trail - so good to check in earlier in the day.

**GPS:** N 46°46'10", W 121°47'38"  
**Height:** 985 m  
**Quality:** \*\*  
**Rate:** \$20



126. TAG:  
FREITAG, 20.7.2018

OHANAPECOSH RIVER, GIFFORD PINCHOT NF  
WASHINGTON

Several dispersed campsites along the Ohanapecosh River in Gifford Pinchot National Forest. Low branches and thick forest makes the approach a bit tricky. The road is close but the sites are down in a valley, so it is quiet. There was one more camper at the site but far away, Ohanapecosh Campground is close by but was full.

**GPS:** N 46°42'53", W 121°34'42"  
**Height:** 484 m  
**Quality:** \*\*\*\*  
**Rate:** --



# Übernachtungsplätze 2018



127. UND 128. TAG:  
SAMSTAG, 21.7.2018 UND  
SONNTAG, 22.7.2018

MORSE CREEK, WENATCHEE  
NF  
WASHINGTON

Big place along Hwy 410 just outside Mt. Rainier National Park. The dirtroad is steep but no low branches are blocking the way. Quiet and close to Chinook Pass and Tipsoo Lake with great reflection of Mt. Rainier at sunrise.

GPS: N 46°54'35", W 121°25'24"  
Height: 1173 m  
Quality: \*\*\*\*  
Rate: --



129. TAG:  
MONTAG, 23.7.2018

CEDAR SPRINGS CAMPG-  
ROUND, WENATCHEE NF  
WASHINGTON

Very nice Campground with big and private sites in the Wenatchee National Forest directly at the Bumping River. You can dip in the water because it warms up in the Bumping Lake further upstream.

GPS: N 46°58'14", W 121°09'50"  
Height: 836 m  
Quality: \*\*\*\*  
Rate: \$5





130. TAG:  
DIENSTAG, 24.7.2018

TANEUM CANYON  
WASHINGTON

Nice camping spot at the Taneum Creek ca 3 miles before Taneum Campground. Quiet, small river to take a bath beside.

**GPS:** N 47°05'13", W 120°47'57"  
**Height:** 646 m  
**Quality:** \*\*\*\*  
**Rate:** --



131. TAG:  
MITTWOCH, 25.7.2018

FR 7330 ALONG CLE ELUM  
RIVER, WENATCHEE NF  
WASHINGTON

Small campsite in the forest above the Cle Elum River along FR 7330

**GPS:** N 47°25'31", W 121°04'16"  
**Height:** 849 m  
**Quality:** \*\*\*  
**Rate:** --



132. TAG:  
DONNERSTAG, 26.7.2018

EIGHT MILE LAKE TRAILHEAD,  
WENATCHEE NF  
WASHINGTON

Overnight parking at the Eight Mile Lake trailhead. The sound of the creek washes out the sound of the cars passing by from the big Stuart Lake and Enchantment trailhead 1 mile up the road. It is a very busy area around Leavenworth.

**GPS:** N 47°32'06", W 120°48'49"  
**Height:** 982 m  
**Quality:** \*\*  
**Rate:** --



# Übernachtungsplätze 2018



133. TAG:  
FREITAG, 27.7.2018

WHITE RIVER ROAD, WE-  
NATCHEE NF  
WASHINGTON

Overnight parking on the Forest Road along the smaragd colored White River to beautiful White River Falls which are 0,5 miles away. There are two nice forest service campground within 2 miles, nobody was here or passed by.

**GPS:** N 47°56'54", W 120°55'58"  
**Height:** 641 m  
**Quality:** \*\*  
**Rate:** --



134. TAG:  
SAMSTAG, 28.7.2018

EAST FORK FOSS RIVER,  
SNOQUALMIE NF  
WASHINGTON

Beautiful and quiet camping spot along the West Fork Foss River just before the bridge across the East Fork Foss River. You only here the roaring river.

**GPS:** N 47°39'11.5", W 121°17'14"  
**Height:** 478 m  
**Quality:** \*\*\*  
**Rate:** --



135. - 136. TAG:  
SONNTAG, 29.7.2018 BIS  
MONTAG, 30.7.2018

FOSS RIVER, SNOQUALMIE NF  
WASHINGTON

Nice and quiet camping spot in the forest along FR 6840 to Malone Mountain just before the bridge across the Foss River. Easy access to the refreshing river.

**GPS:** N 47°39'20", W 121°17'34"  
**Height:** 461 m  
**Quality:** \*\*\*  
**Rate:** --



# Übernachtungsplätze 2018



137. TAG:  
DIENSTAG, 31.7.2018

FUTURE OF FLIGHT, BOEING  
COMPANY, EVERETT

WASHINGTON

Overnight parking at Future of Flight Exhibition of the Boeing company in Everett. The traffic is a terribly noisy. On the one side you have the highway on the other side is the airport with small aircrafts starting and landing. In addition Boeing is testing the aircraft turbines also in the night. The much better place to stay overnight in the area is the parking lot at Mukilteo Ferry Terminal.

**GPS:** N 47°55'21", W 122°17'20"  
**Height:** 165 m  
**Quality:** \*  
**Rate:** --



138. TAG:  
MITTWOCH, 1.8.2018

GLACIER CREEK, MT. BAKER  
NF

WASHINGTON

Overnight parking at a turnaround in the forest near Glacier Creek along Mt. Baker Highway. The constant noise of the creek washes out the few traffic noise. Very quiet.

**GPS:** N 48°53'18.5", W 121°56'30"  
**Height:** 217 m  
**Quality:** \*\*  
**Rate:** --



139. TAG:  
DONNERSTAG, 2.8.2018

WHITE SALMON ROAD, MT.  
BAKER NF

WASHINGTON

Nice camping spot along White Salmon Road close to Picture Lake and Heather Meadows in Mt. Baker National Forest. Absolutely quiet and remote place in the North Cascades. AT&T cell phone service available.

**GPS:** N 48°52'28", W 121°39'10"  
**Height:** 1057 m  
**Quality:** \*\*\*  
**Rate:** --



# Übernachtungsplätze 2018



140. TAG:  
FREITAG, 3.8.2018

WATSON LAKES ROAD, MT.  
BAKER NF  
WASHINGTON

Overnight Parking at a pullout along the Forest Road up to Watson Lakes close to a small waterfall. There is one great spot with a view to Baker Lake 1 mile down the road, but unfortunately it was occupied.

**GPS:** N 48°39'28", W 121°39'06"  
**Height:** 638 m  
**Quality:** \*\*  
**Rate:** --



141. TAG:  
SAMSTAG, 4.8.2018

FR 7310 NEAR BAKER HOT  
SPRINGS, MT. BAKER NF  
WASHINGTON

Overnight Parking at a small pullout along the Forest Road 7310 500 yards behind the turn to Baker Hot Spring which was the parking for Rainbow Falls Viewpoint. Unfortunately the viewpoint of the falls now is totally overgrown by trees. You can also stay overnight at the trailhead to Baker Hot Springs but there were 3 more campers.

**GPS:** N 48°46'08", W 121°40'36"  
**Height:** 576 m  
**Quality:** \*\*  
**Rate:** --



142. TAG:  
SONNTAG, 5.8.2018

WATSON LAKES ROAD NEAR  
BAKER LAKE DAM, MT. BAKER  
NF  
WASHINGTON

Overnight Parking at a small pullout just behind Baker Lake Dam. Not a nice place, but quiet and close to Klushan Boat Ramp at Baker Lake.

**GPS:** N 48°38'46", W 121°41'20"  
**Height:** 220 m  
**Quality:** \*  
**Rate:** --



# Übernachtungsplätze 2018



143. BIS 144. TAG:  
MONTAG, 6.8.2018 BIS  
DIENSTAG, 7.8.2018

VEE CREEK AT CASCADE RI-  
VER, MT. BAKER NF  
WASHINGTON

Nice camping spot at Vee Creek where it meets Cascade River. The dirtroad from Cascade River Road is very small but ok for 2 WD and not problem with 12 ft. height. We took a very cold and refreshing bath in the adjacent Cascade River.

**GPS:** N 48°27'54", W 121°13'00"  
**Height:** 334 m  
**Quality:** \*\*\*  
**Rate:** --



145. TAG:  
MITTWOCH, 8.8.2018

WASHINGTON PASS, NORTH  
CASCADES NRA  
WASHINGTON

Overnight parking at the big parking lot of Washington Pass Overlook which is 500 yards away from Hwy 20 and relatively quiet. There were 2 more camper with us but far away.

**GPS:** N 48°31'36", W 120°39'04"  
**Height:** 1685 m  
**Quality:** \*\*  
**Rate:** --



146. TAG:  
DONNERSTAG, 9.8.2018

HOME DEPOT OMAK  
WASHINGTON

After Omak Stampede we left the fairgrounds at 10 pm for a quieter place to sleep. Home Depot is located behind Walmart and ok for one night.

**GPS:** N 48°24'57", W 119°30'09"  
**Height:** 311m  
**Quality:** \*  
**Rate:** --





147. TAG:  
FREITAG, 10.8.2018

DRY CANYON ROAD, COLLVILLE NF

WASHINGTON

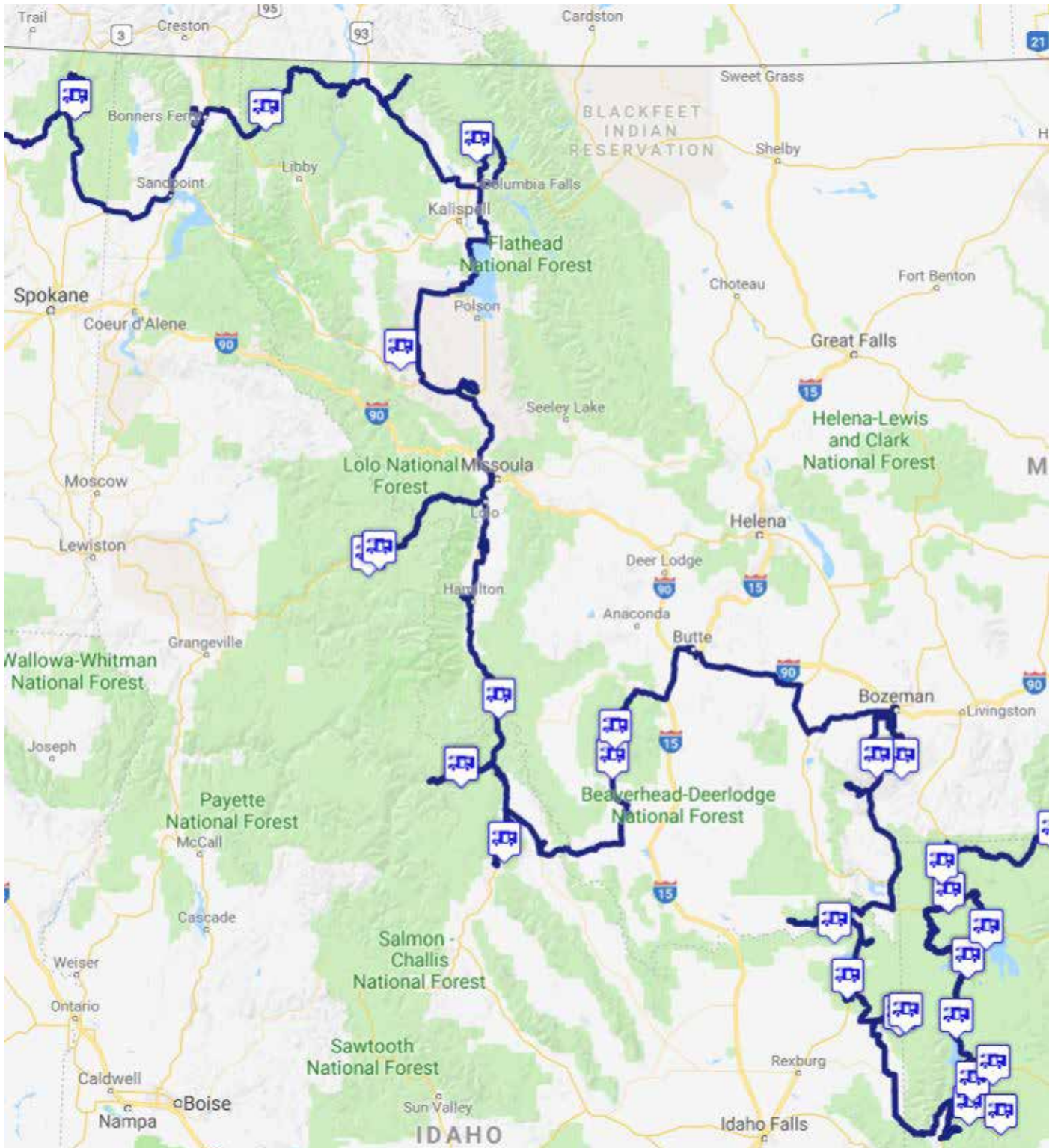
On the way to Sullivan Lake it got too late and we moved on a forest road for overnight parking. Nobody passed by, very quiet.

**GPS:** N 48°44'58", W 117°20'24"  
**Height:** 913 m  
**Quality:** \*\*  
**Rate:** --



# IDAHO UND MONTANA

11.08.2018 BIS 27.08.2018



**Idaho:** 8,5 Tage - 937 km - 110 km pro Tag  
**Montana:** 9,5 Tage - 2019 km - 213 km pro Tag



# Übernachtungsplätze 2018



148. TAG:  
SAMSTAG, 11.8.2018

BURNT DUTCH ROAD, KOOTENAI NF  
MONTANA

Overnight parking at Burnt Dutch Road that branches off from Yaak River Road. Quiet, no car passed by on Saturday evening.

**GPS:** N 48°44'14", W 115°50'28"  
**Height:** 990 m  
**Quality:** \*\*\*  
**Rate:** --



149. TAG:  
SONNTAG, 12.8.2018

FR 316 AT BIG CREEK,  
FLATHEAD NF  
MONTANA

Big and level area for beautiful and quiet camping at FR 316 along Big Creek to Moose Lake. There is a nice view to the mountains of Glacier National Park across the North Fork Flathead River valley.

**GPS:** N 48°36'14", W 114°11'32"  
**Height:** 1086 m  
**Quality:** \*\*\*\*  
**Rate:** --



150. TAG:  
MONTAG, 13.8.2018

RAINBOW LAKE  
MONTANA

Big camping spot at Rainbow Lake. You can drive further down the small dirt road and camp directly at the lake where you also find some picnic tables. At both places the distant noise from Hwy 28 is present. Low branches might be in your way if you go down to the lake.

**GPS:** N 47°31'40", W 114°44'44"  
**Height:** 1098 m  
**Quality:** \*\*\*  
**Rate:** --



# Übernachtungsplätze 2018



151. TAG:  
DIENSTAG, 14.8.2018

LOCHSA RIVER, CLEARWATER  
NF

IDAHO

Several dispersed campsites along the Lochsa River in Clearwater National Forest at Hwy 12. The Highway is close and you hear the cars but there are not many passing by in the night.

**GPS:** N 46°28'04", W 114°56'38"  
**Height:** 940 m  
**Quality:** \*\*  
**Rate:** --



152. TAG:  
MITTWOCH, 15.8.2018

DOE CREEK ROAD, CLEARWATER  
NF

IDAHO

Overnight parking at a small pullout along Doe Creek Road just after the Bridge across Squaw Creek, close to beautiful Jerry Johnson Hot Springs, quiet, constant tumbling noise of Doe Creek.

**GPS:** N 46°29'56", W 114°51'46"  
**Height:** 977 m  
**Quality:** \*\*  
**Rate:** --



153. TAG:  
DONNERSTAG, 16.8.2018

WEST FORK CAMP CREEK  
ROAD, BITTERROOT NF

MONTANA

Nice camping spot along West Fork Camp Creek Road in Bitterroot National Forest. Very quiet. Close to Lost Trail Hot Spring.

**GPS:** N 45°44'56", W 113°57'22"  
**Height:** 1583 m  
**Quality:** \*\*\*  
**Rate:** --



# Übernachtungsplätze 2018



154. - 155. TAG:  
FREITAG, 17.8.2018 BIS  
SAMSTAG, 18.8.2018

SALMON RIVER,  
SALMON-CHALLIS NF  
IDAHO

Several dispersed campsites along the Lochsa River in Clearwater National Forest at Hwy 12. The Highway is close and you hear the cars but there are not many passing by in the night.

<b>GPS:</b>	N 45°23'49", W 114°13'42"
<b>Height:</b>	1027 m
<b>Quality:</b>	*****
<b>Rate:</b>	--



156. TAG:  
SONNTAG, 19.8.2018

12 MILE CREEK ROAD, SAL-  
MON NF  
IDAHO

Nice overnight parking place along 12 Mile Creek Road in Salmon-Challis National Forest, quiet, 10 mi north of the beautiful Goldbug Hot Spring.

<b>GPS:</b>	N 45°00'46", W 113°54'21"
<b>Height:</b>	1389 m
<b>Quality:</b>	**
<b>Rate:</b>	--



# Übernachtungsplätze 2018



157. TAG:  
MONTAG, 20.8.2018

BLUE CREEK TRAILHEAD, BEA-  
VERHEAD-DEERLODGE NF  
MONTANA

Overnight parking at Blue Creek Trailhead in Beaverhead-Deerlodge National Forest along Pioneer Mountains Scenic Byway close to Elkhorn Hot Spring.

**GPS:** N 45°26'50", W 113°07'24"  
**Height:** 2115 m  
**Quality:** \*\*  
**Rate:** --



158. TAG:  
DIENSTAG, 21.8.2018

WISE CREEK MEADOWS, BEA-  
VERHEAD-DEERLODGE NF  
MONTANA

Several campsites along Pioneer Mountains Scenic Byway in Beaverhead-Deerlodge National Forest with great views across the Wise Creek Meadows which are a perfect area for viewing Elk, Moose, Deer and smaller mammals.

**GPS:** N 45°35'55", W 113°06'08"  
**Height:** 2062 m  
**Quality:** \*\*\*\*  
**Rate:** --



159. TAG:  
MITTWOCH, 22.8.2018

MOSER JUMPOFF ROAD, GAL-  
LATIN NF  
MONTANA

Overnight parking along Moser Jumpoff Road branching off from Hyalite Canyon Road in Gallatin National Forest. There is no camping allowed within 1/2 mile from Hyalite Canyon Road. All Campsites along Hyalite Canyon Road were occupied.

**GPS:** N 45°25'52", W 111°00'41"  
**Height:** 2023 m  
**Quality:** \*\*  
**Rate:** --



# Übernachtungsplätze 2018



160. TAG:  
DONNERSTAG, 23.8.2018

SPIRE ROCK CAMPGROUND,  
GALLATIN NF  
MONTANA

Nice Campground with lots of space  
between the sites in a narrow valley along  
Squaw Creek in Gallatin National Forest. Pit  
toilets, picnic tables.

**GPS:** N 46°29'56", W 114°51'46"  
**Height:** 1704 m  
**Quality:** \*\*\*  
**Rate:** \$ 11



161. TAG:  
FREITAG, 24.8.2018

RED ROCK PASS, TARGHEE NF  
IDAHO / MONTANA

Camping at Red Rock Pass at the continen-  
tal divide between Idaho and Montana.  
Open Area with a view to the mountains  
around. Lots of space.

**GPS:** N 44°35'54", W 111°31'15"  
**Height:** 2170 m  
**Quality:** \*\*\*  
**Rate:** --





# Übernachtungsplätze 2018



162. TAG:  
SAMSTAG, 25.8.2018

WOOD ROAD 16, MESA FALLS  
SCENIC BYWAY, TARGHEE NF  
IDAHO

Great camping spot with a spectacular view across Henrys Fork Snake River along Mesa Falls Scenic Byway in Targhee National Forest. There are many dispersed camping opportunities along Mesa Falls Scenic Byway.

<b>GPS:</b>	N 44°18'20", W 111°25'58"
<b>Height:</b>	1872 m
<b>Quality:</b>	****
<b>Rate:</b>	--



163 - 164. TAG:  
SONNTAG, 26.8.2018 BIS  
MONTAG, 27.8.2018

WYOMING CREEK, TARGHEE NF  
IDAHO

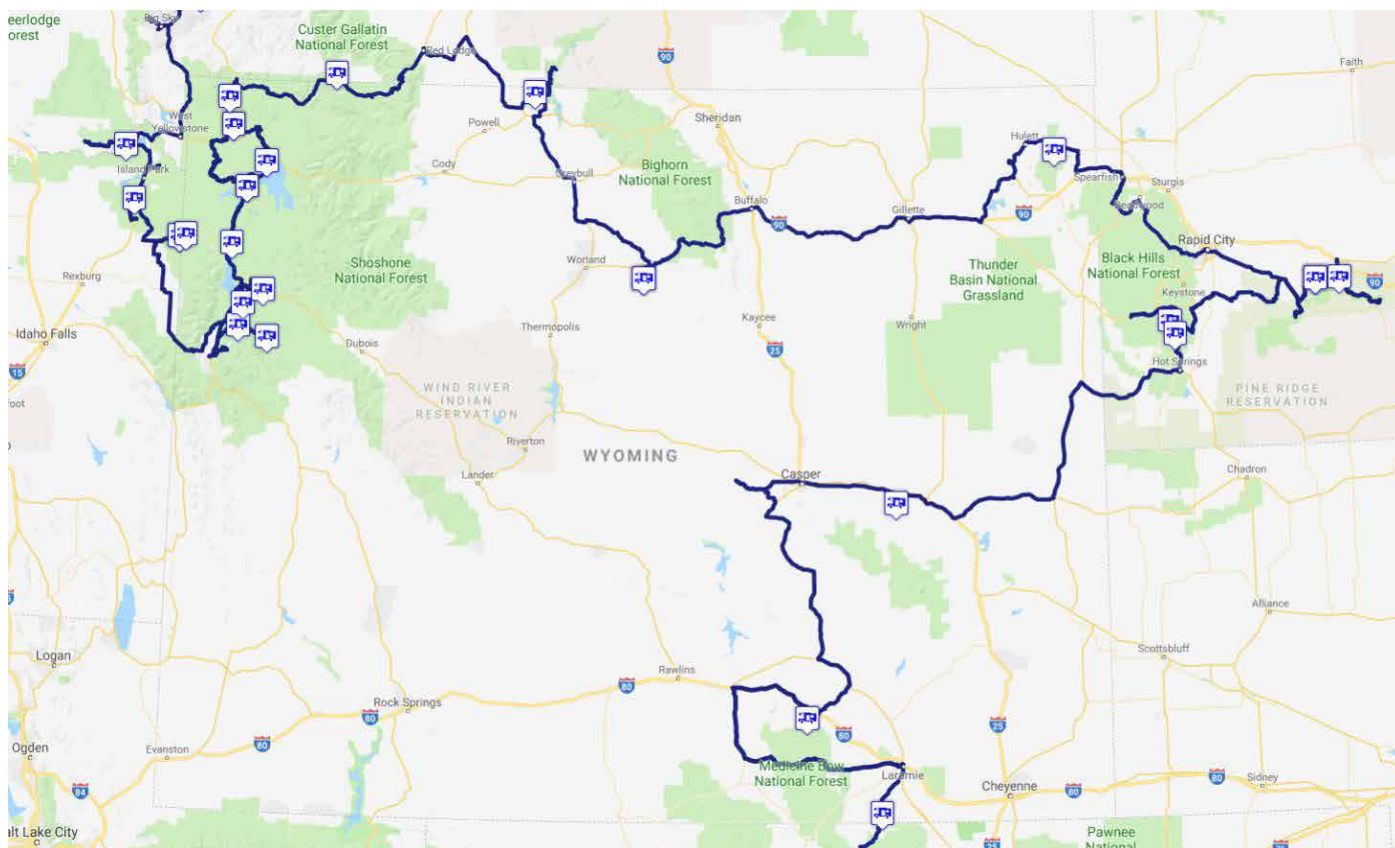
Big camping area with bear proof food storage in Targhee National Forest at Wyoming Creek. The forest road branches off Cave Falls Road ca 2 miles before the Bechler Area of Yellowstone National Park and leads to gorgeous Sheep Falls.

<b>GPS:</b>	N 44°06'47", W 111°04'00"
<b>Height:</b>	1916 m
<b>Quality:</b>	****
<b>Rate:</b>	--



# WYOMING UND SOUTH DAKOTA

28.08.2018 BIS 23.09.2018



**Wyoming:** 19,5 Tage - 2825 km - 145 km pro Tag

**South Dakota:** 7 Tage - 850 km - 121 km pro Tag





165. TAG:  
DIENSTAG, 28.8.2018

CAVE FALLS CAMPGROUND,  
TARGHEE NF  
WYOMING

National Forest Campground along Falls River in the Targhee National Forest. Private and quiet. Pit toilets, picnic tables, fire rings and water from a spring. There are 23 sites and only 3 sites were occupied.

<b>GPS:</b>	N 44°07'36", W 111°01'09"
<b>Height:</b>	1899 m
<b>Quality:</b>	***
<b>Rate:</b>	\$ 10



166. TAG:  
MITTWOCH, 29.8.2018

GROS VENTRE RIVER ROAD,  
BRIDGER-TETON NF  
WYOMING

Overnight Parking just 200 yards outside Grand Teton Nationalpark in Bridger Teton National Forest along Gros Ventre Road. Further up Gros Ventre Road are more camping spots.

<b>GPS:</b>	N 43°38'27", W 110°34'52"
<b>Height:</b>	2058 m
<b>Quality:</b>	**
<b>Rate:</b>	--







167. TAG:  
DONNERSTAG, 30.8.2018

UPPER GROS VENTRE RIVER  
VALLEY, BRIDGER-TETON NF  
WYOMING

Perfect camping in the Upper Gros Ventre River Valley in Bridger Teton National Forest with a view to the Tetons. The Gros Ventre Valley and River are beautiful and quite remote with a few ranches and mainly solitude.

<b>GPS:</b>	N 43°35'15", W 110°21'35"
<b>Height:</b>	2231 m
<b>Quality:</b>	*****
<b>Rate:</b>	--







168. TAG:  
FREITAG, 31.8.2018

TETON VIEW, BRIDGER-TETON  
NF

WYOMING

Great Camping spot with a spectacular view across the Snake River Valley to the Teton Range. Just outside Grant Teton National Park in Bridger Teton National Forest. There are several dispersed campsites along the forest road. There were 10 more campers with us at the Labour Day Weekend.

<b>GPS:</b>	N 43°45'48", W 110°33'15"
<b>Height:</b>	2167 m
<b>Quality:</b>	****
<b>Rate:</b>	--





# Übernachtungsplätze 2018



169. TAG:  
SAMSTAG, 1.9.2018

BUFFALO VALLEY ROAD, BRID-  
GER-TETON NF  
WYOMING

Great place in the Buffalo Valley on a cliff  
above a horseshoe bend of Buffalo Creek  
with amazing view to the Tetons.

<b>GPS:</b>	N 43°50'38", W 110°24'18"
<b>Height:</b>	2104 m
<b>Quality:</b>	*****
<b>Rate:</b>	--





# Übernachtungsplätze 2018



170. TAG:  
SONNTAG, 2.9.2018

SHEFFIELD CREEK CAMPGROUND, BRIDGER-TETON NF  
WYOMING

Nice Forest Service Campground near Flagg Ranch with lots of space. Much quieter and more private than the big campground at Flagg Ranch.

**GPS:** N 44°05'31.5", W 110°39'45.5"  
**Height:** 2075 m  
**Quality:** \*\*\*\*  
**Rate:** \$ 10



171. BIS 172. TAG:  
MONTAG, 3.9.2018 BIS  
DIENSTAG, 4.9.2018

GRANT VILLAGE CAMPGROUND  
SITE 293, YELLOWSTONE NP  
WYOMING

Big Campground (430 sites) operated by Xanterra, very crowded but surprisingly quiet. Sites can be reserved: \$ 30

**GPS:** N 44°24'05", W 110°33'50"  
**Height:** 2363 m  
**Quality:** \*\*  
**Rate:** \$ 15



173. TAG:  
MITTWOCH, 5.9.2018

BRIDGE BAY CAMPGROUND  
SITE 355, YELLOWSTONE NP  
WYOMING

Big Campground (432 sites) operated by Xanterra, very crowded but surprisingly quiet. Sites can be reserved: \$ 28. There are often Bison and Elk nearby at the meadows close to Yellowstone Lake.

**GPS:** N 44°32'38.5", W 110°25'33"  
**Height:** 2379 m  
**Quality:** \*\*  
**Rate:** \$ 28



# Übernachtungsplätze 2018



174. BIS 175. TAG:  
DONNERSTAG, 6.9.2018 BIS  
FREITAG, 7.9.2018

NORRIS CAMPGROUND SITE  
24, YELLOWSTONE NP  
WYOMING

Biggest Campground in Yellowstone National Park operated by the National Park Service with 112 sites. Central situated in the park. Sites first come first serve. Usually full before noon. \$ 20.

**GPS:** N 44°44'17", W 110°41'39"  
**Height:** 2306 m  
**Quality:** \*\*  
**Rate:** \$ 20



176. TAG:  
SAMSTAG, 8.9.2018

INDIAN CREEK CAMPGROUND  
SITE 14, YELLOWSTONE NP  
WYOMING

One of the nicer campgrounds in Yellowstone National Park (70 sites), quiet and a little more private than the other big campgrounds. First come, first serve, \$ 15, unfortunately closing soon after Labor Day.

**GPS:** N 44°53'13", W 110°44'17"  
**Height:** 2244 m  
**Quality:** \*\*\*  
**Rate:** \$ 15



177. TAG:  
SONNTAG, 9.9.2018

LULU PASS ROAD, GALLATIN  
NF  
MONTANA

Great place outside Yellowstone National Park in Gallatin National Forest with a gorgeous view towards Beartooth Mountains and Absaroka Range. The Lulu Pass Road is very bumpy, high clearance is useful.

**GPS:** N 45°02'10", W 109°54'42"  
**Height:** 2582 m  
**Quality:** \*\*\*\*  
**Rate:** --





178. TAG:  
MONTAG, 10.9.2018

7 1/2 ROAD, WEST OF  
BIGHORN CANYON  
WYOMING

Big open area in the desert on BLM Land  
for camping with a 360° view to Bighorn  
Mountains. Absolutely quiet and remote.

**GPS:** N 44°57'51", W 108°22'11"  
**Height:** 1347m  
**Quality:** \*\*\*\*  
**Rate:** --



179. BIS 180. TAG:  
DIENSTAG, 11.9.2018 BIS  
MITTWOCH, 12.9.2018

CASTLE GARDENS SOUTH OF  
TEN SLEEP  
WYOMING

Nice BLM Campground with lots of space  
between the 4 sites at the beautiful rock  
formations of Castle Gardens at the end  
of a 6 mile gravel road which was in good  
shape. We were the only people there.

**GPS:** N 43°57'15.5", W 107°30'57"  
**Height:** 1538 m  
**Quality:** \*\*\*\*\*  
**Rate:** --





# Übernachtungsplätze 2018



181. TAG:  
DONNERSTAG, 13.9.2018

FAWN CREEK ROAD, BLACK  
HILLS NF  
WYOMING

Overnight parking in Black Hills National Forest along Fawn Creek on the dirt road to Lake Cook Recreation Area after visiting Devils Tower. Only 1.5 miles from the highway. Quiet.

**GPS:** N 44°38'29", W 104°22'34"  
**Height:** 1337 m  
**Quality:** \*\*\*  
**Rate:** --



182. BIS 183. TAG:  
FREITAG, 14.9.2018 BIS  
SAMSTAG, 15.9.2018

SAGE CREEK CAMPGROUND,  
BADLANDS NP  
SOUTH DAKOTA

Primitive Campground with pit toilets, picnic tables - some shaded - in Badlands National Park in a beautiful setting. There is no camping fee. Prairie dogs are very close to the sites and if you are lucky Bison will also visit the campground.

**GPS:** N 43°53'40", W 102°24'50"  
**Height:** 784 m  
**Quality:** \*\*\*\*\*  
**Rate:** --



184. TAG:  
SONNTAG, 16.9.2018

BUFFALO GAP NATIONAL  
GRASSLAND  
SOUTH DAKOTA

Great dispersed camping at a rim north of Badlands National Park in Buffalo Gap National Grassland. The view across the badlands is gorgeous. It can get very windy. Free, quiet, but there will be more campers around and some will have generators.

**GPS:** N 43°53'32", W 102°13'40"  
**Height:** 935 m  
**Quality:** \*\*\*\*\*  
**Rate:** --



# Übernachtungsplätze 2018



185. TAG:  
MONTAG, 17.9.2018

SAGE CREEK CAMPGROUND,  
BADLANDS NP  
SOUTH DAKOTA

Primitive Campground with pit toilets, picnic tables - some shaded - in Badlands National Park in a beautiful setting. There is no camping fee. Prairie dogs are very close to the sites and if you are lucky Bison will also visit the campground.

**GPS:** N 43°53'40", W 102°24'50"  
**Height:** 784 m  
**Quality:** \*\*\*\*\*  
**Rate:** --



186. TAG:  
DIENSTAG, 18.9.2018

HERBERT DRAW ROAD, BLACK  
HILLS NF  
SOUTH DAKOTA

Nice camping in the Black Hills National Forest along Herbert Draw Road. The place is open to the south for some sunshine and close to Custer State Park and Wind Cave National Park. The road is in good condition and only 2 cars passed by. Very quiet.

**GPS:** N 43°41'33", W 103°32'00.5"  
**Height:** 1706 m  
**Quality:** \*\*\*  
**Rate:** --



187. TAG:  
MITTWOCH, 19.9.2018

BEAVER CREEK ROAD, BLACK  
HILLS NF  
SOUTH DAKOTA

Overnight parking 50 yard outside Wind Cave National Park along Beaver Creek Road in Black Hills National Forest. There is a lot of private property around in the National Forest, so it is not so easy to find a suitable spot close to Custer State Park or Wind Cave National Park. Only one car passed by.

**GPS:** N 43°37'15", W 103°30'04"  
**Height:** 1417 m  
**Quality:** \*\*  
**Rate:** --



# Übernachtungsplätze 2018



188. TAG:  
DONNERSTAG, 20.9.2018

AYRES NATURAL BRIDGE,  
DOUGLAS  
WYOMING

Overnight parking at the gate to Ayres Natural Bridge Park (open 8 am to 8 pm). The road ends here, so it is very quiet. In Ayres Natural Bridge Park is a small Campground with 5 sites directly at the Natural Bridge.

**GPS:** N 44°44'07", W 105°37'16"  
**Height:** 1646 m  
**Quality:** \*\*  
**Rate:** --



189. TAG:  
FREITAG, 21.9.2018

WHITE ROCK CANYON, MEDICINE BOWL NF  
WYOMING

Great camping spot in Medicine Bowl National Forest above White Rock Canyon with a nice view. There are several places to stay in the area. A moose passed by in the evening just 50 yards away.

**GPS:** N 41°34'09", W 106°17'14"  
**Height:** 2612 m  
**Quality:** \*\*\* \*  
**Rate:** --



190. TAG:  
SAMSTAG, 22.9.2018

SAND CREEK, WYOMING STATE TRUST LAND  
WYOMING

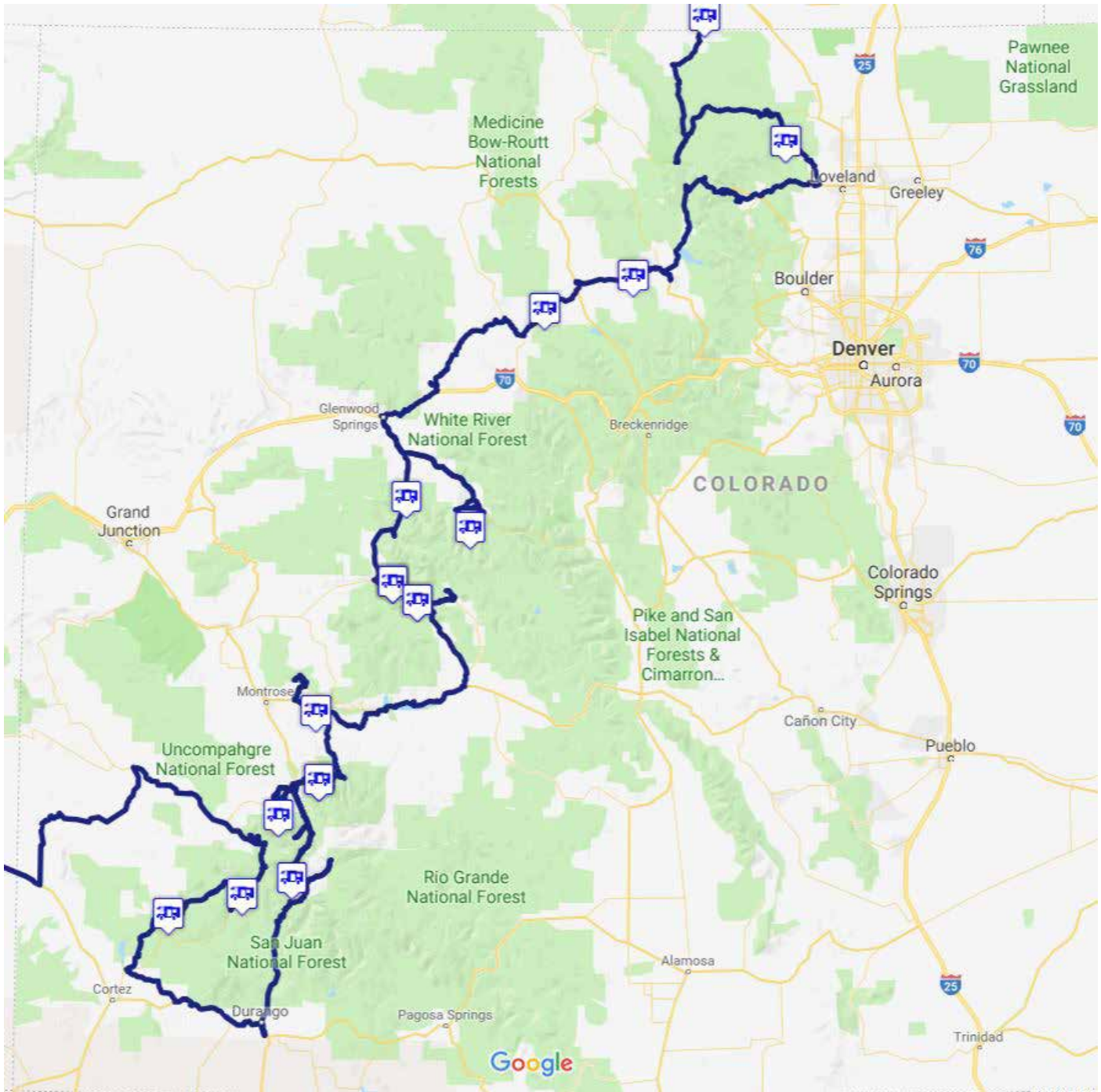
Overnight Parking at the Trailhead to the beautiful Sand Creek Rock Formations on Wyoming State Trust Land. There is no parking lot so we pulled from the dirt road into the grass and camped beside the road.

**GPS:** N 41°02'48", W 105°44'43"  
**Height:** 2267 m  
**Quality:** \*\*  
**Rate:** --



# COLORADO

24.09.2018 BIS 10.10.2018



**Colorado:** 17 Tage - 2173 km - 128 km pro Tag



# Übernachtungsplätze 2018



191. TAG:  
SONNTAG, 23.9.2018

BUCKHORN ROAD, ROOSEVELT  
NF

COLORADO

Overnight Parking in Roosevelt National Forest along Buckhorn Road branching off from Cache la Poudre Scenic Byway. Not a nice place and several cars passed by but it is getting crowded at the east side of the Mountain Range in Colorado with a lot of private property.

**GPS:** N 40°34'19", W 105°21'07"  
**Height:** 2029 m  
**Quality:** \*\*  
**Rate:** --



192. TAG:  
MONTAG, 24.9.2018

PIONEER PARK, HOT SULPHUR  
SPRINGS

COLORADO

Nice little campground without charge in Hot Sulphur Springs close the the beautiful Hot Springs with 24 pools. Picnic Tables and Pit Toilet available. Only problem are the 5 noisy trains passing by during the night only a few feet away.

**GPS:** N 40°04'28", W 106°06'37"  
**Height:** 2341 m  
**Quality:** \*\*\*  
**Rate:** --



193. TAG:  
DIENSTAG, 25.9.2018

O.C. MUGRAGE CAMPGROUND,  
RADIUM

COLORADO

Small campground without charge near Radium Hot Springs in the beautiful Upper Colorado River Valley. Remote and quiet.

**GPS:** N 39°57'06", W 106°32'35"  
**Height:** 2109 m  
**Quality:** \*\*\*\*  
**Rate:** --



# Übernachtungsplätze 2018



194. TAG:  
MITTWOCH, 26.9.2018

SILVERQUEEN CAMPGROUND,  
WHITE RIVER NF  
COLORADO

One of three National Forest Campgrounds in Maroon Bells Recreation Area (\$15). We did not see much because we arrived in the dark and left in the dark for sunrise at Maroon Lake.

GPS: N 39°07'46", W 106°54'06"  
Height: 2643 m  
Quality: \*\*\*  
Rate: --



195. TAG:  
DONNERSTAG, 27.9.2018

AVALANCHE CREEK ROAD,  
WHITE RIVER NF  
COLORADO

Dispersed camping along the Avalanche Creek Road at the base of Mt. Sopris with the noise of the roaring Avalanche Creek. The road is rocky, steep and bumpy. There is a small campground half mile ahead at the end of the road.

GPS: N 39°14'34", W 107°12'40"  
Height: 2224 m  
Quality: \*\*\*\*  
Rate: --





# Übernachtungsplätze 2018



196. BIS 198. TAG:  
FREITAG, 28.9.2018 BIS  
SONNTAG, 30.9.2018

KEBLER PASS ROAD, GUNNISON NF  
COLORADO

One of the best campsites in the US up to now on a side road up a hill from Kebler Pass Road in Gunnison National Forest. The unobstructed view over the aspen and oak fall color to Beckwith and Marcellina Mountains is fabulous.

<b>GPS:</b>	N 38°55'40", W 107°16'29"
<b>Height:</b>	2431 m
<b>Quality:</b>	*****
<b>Rate:</b>	--





# Übernachtungsplätze 2018



199. - 200. TAG:  
MONTAG, 1.10.2018 BIS  
DIENSTAG, 2.10.2018

HORSE RANCH PARK, KEBLER  
PASS, GUNNISON NF

COLORADO

Great campsite along Kebler Pass Road at Horse Ranch Park with a gorgeous view to Beckwith Mountain with great fall color.

**GPS:** N 38°51'25", W 107°09'18.5"  
**Height:** 2720 m  
**Quality:** \*\*\*\*\*  
**Rate:** --



201. TAG:  
MITTWOCH, 3.10.2018

CERRO SUMMIT, UPPER TRAIL-  
HEAD

COLORADO

Overnight parking at the upper trailhead in Cerro Summit Recreation Area. Good cell phone service. A little noise from the Highway but not disturbing.

**GPS:** N 38°26'21", W 107°38'19"  
**Height:** 2471 m  
**Quality:** \*\*  
**Rate:** --



202. TAG:  
DONNERSTAG, 4.10.2018

COUNTY ROAD 7, UNCOMPAHG-  
RE NF

COLORADO

Nice camping at the end of County Road 7 just after entering Uncompahgre National Forest. Nice view to Sneffell Range with an immense amount of fall color around.

**GPS:** N 38°02'50", W 107°48'33"  
**Height:** 2773 m  
**Quality:** \*\*\*\*\*  
**Rate:** --



# Übernachtungsplätze 2018



203. - 204. TAG:  
FREITAG, 5.10.2018 BIS  
SAMSTAG, 6.10.2018

OWL CREEK PASS VISTA POINT,  
UNCOMPAHGRE NF  
COLORADO

Great camping at the vista point below Owl Creek Pass in Uncompahgre National Forest with a gorgeous view to Cimmaron Ridge and tons of colorful aspen and oak. One of the nicest camping spots in Colorado.

<b>GPS:</b>	N 38°10'51", W 107°37'13"
<b>Height:</b>	2630 m
<b>Quality:</b>	*****
<b>Rate:</b>	--



205. TAG:  
SONNTAG, 7.10.2018

GOLDEN HORN DESIGNATED  
CAMPING AREA, SOUTH MINERAL  
CREEK, UNCOMPAHGRE NF  
COLORADO

Nice designated camping area at South Mineral Creek in Uncompahgre National Forest. Charge for South Mineral Campground at the end of the road 1.5 miles ahead is \$ 30 per night. There are several designated camping areas along the 6 mile road which are free.

<b>GPS:</b>	N 37°48'45", W 107°44'36"
<b>Height:</b>	2958 m
<b>Quality:</b>	*****
<b>Rate:</b>	--



# Übernachtungsplätze 2018

---



NEXT MORNING

GOLDEN HORN DESIGNATED  
CAMPING AREA, SOUTH MINE-  
RAL CREEK, UNCOMPAHGRE NF



206. TAG:  
MONTAG, 8.10.2018

COUNTY ROAD R, SAN JUAN  
NF  
COLORADO

Camping at County Road R just off West  
Dolores River Road in San Juan National  
Forest. Quiet.

**GPS:** N 37°40'08", W 108°19'31"  
**Height:** 2404 m  
**Quality:** \*\*\*  
**Rate:** --



207. TAG:  
DIENSTAG, 9.10.2018

BARLOW LAKE, BOLAM PASS  
ROAD (CR 58), SAN JUAN NF  
COLORADO

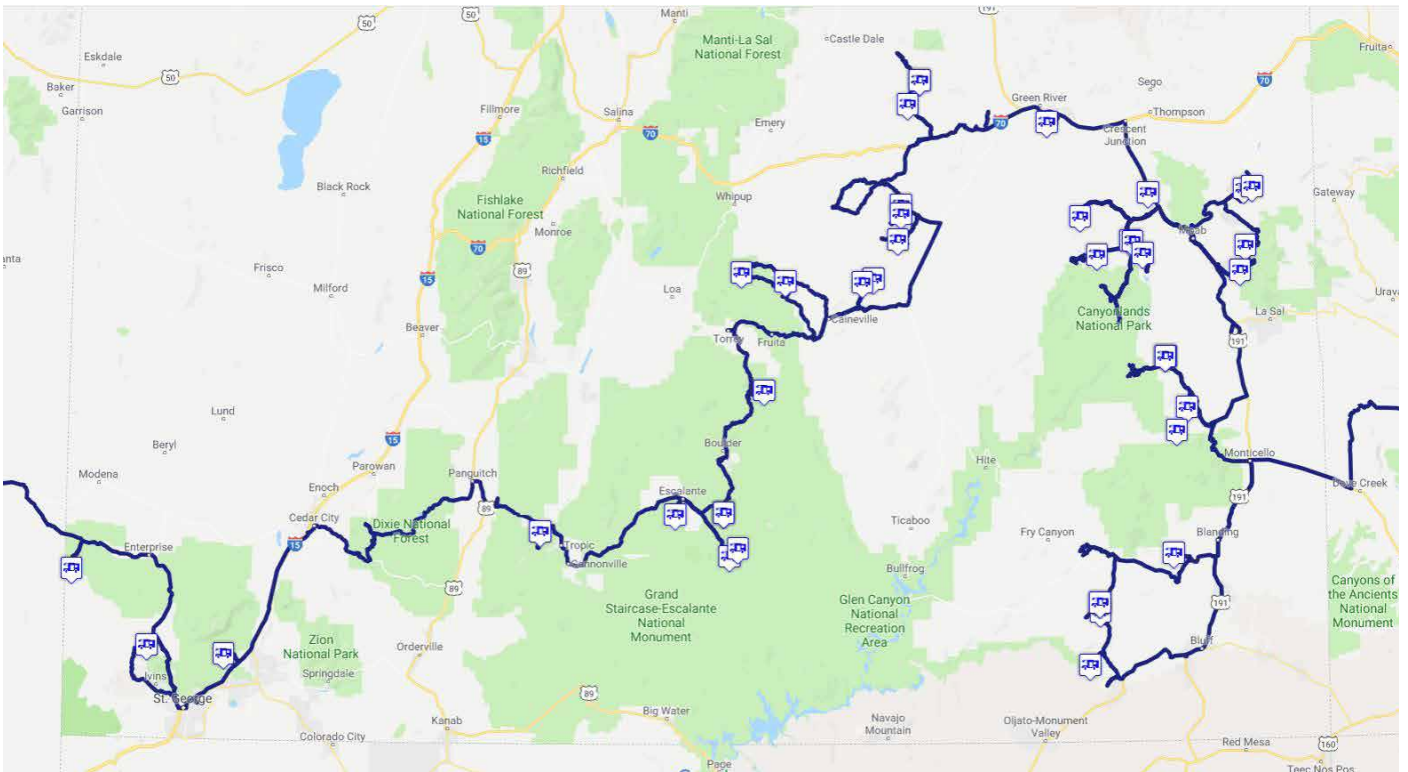
Camping at Barlow Lake beside County  
Road 58 to Bolam Pass. Not nice, but away  
from Highway 145 and quiet.

**GPS:** N 37°45'08", W 107°58'37"  
**Height:** 2983 m  
**Quality:** \*\*\*  
**Rate:** --



## UTAH

11.10.2018 BIS 20.11.2018



**Utah:** 43 Tage - 3543 km - 82 km pro Tag



# Übernachtungsplätze 2018



208. TAG:  
MITTWOCH, 10.10.2018

TOWER HOUSE TRAILHEAD, CEDAR MESA, BEARS EARS NM  
UTAH

Camping at County Road R just off West Dolores River Road in San Juan National Forest. Quiet.

**GPS:** N 37°34'58", W 109°39'16"  
**Height:** 1777 m  
**Quality:** \*\*\*\*  
**Rate:** --



209. TAG:  
DONNERSTAG, 11.10.2018

SLICKHORN ROAD, CEDAR MESA, BEARS EARS NM  
UTAH

Camping at Barlow Lake beside County Road 58 to Bolam Pass. Not nice, but away from Highway 145 and quiet.

**GPS:** N 37°24'11", W 109°56'59"  
**Height:** 1966 m  
**Quality:** \*\*\*\*  
**Rate:** --



210. - 211. TAG:  
FREITAG, 12.10.2018 BIS  
SAMSTAG, 13.10.2018

BULLET CANYON TRAILHEAD, CEDAR MESA, BEARS EARS NM  
UTAH

Small campground without charge near Radium Hot Springs in the beautiful Upper Colorado River Valley. Remote and quiet.

**GPS:** N 37°25'52", W 109°57'00"  
**Height:** 1945 m  
**Quality:** \*\*\*  
**Rate:** --



# Übernachtungsplätze 2018

---



212. TAG:  
SONNTAG, 14.10.2018

MULEY POINT, GLEN CANYON  
NRR  
UTAH

One of the real great places for free camping in the Southwest with a great view across the San Juan River to Monument Valley and Navajo Mountain.

<b>GPS:</b>	N 37°14'09", W 109°59'32.5"
<b>Height:</b>	1926 m
<b>Quality:</b>	*****
<b>Rate:</b>	--



213. TAG:  
MONTAG, 15.10.2018

HAMBURGER ROCK CAMP-  
GROUND, INDIAN CREEK NRR  
UTAH

Great dispersed camping along Lockhart Basin Road in Indian Creek National Recreation Area. There are many sites with good views of the classic landscape of the Canyonlands.

<b>GPS:</b>	N 38°11'57", W 109°40'13"
<b>Height:</b>	1456 m
<b>Quality:</b>	****
<b>Rate:</b>	--



# Übernachtungsplätze 2018



214. - 215. TAG:  
DIENSTAG, 16.10.2018 BIS  
MITTWOCH, 17.10.2018

HAMBURGER ROCK CAMP-  
GROUND, INDIAN CREEK NRR  
UTAH

Great dispersed camping along Lockhart Basin Road in Indian Creek National Recreation Area. There are many sites with good views of the classic landscape of the Canyonlands.

<b>GPS:</b>	N 38°11'58.5", W 109°40'22"
<b>Height:</b>	1469 m
<b>Quality:</b>	*****
<b>Rate:</b>	--



216. TAG:  
DONNERSTAG, 18.10.2018

BEEF BASIN ROAD, BEARS  
EARS NM  
UTAH

Dispersed camping along Beef Basin Road in Indian Creek National Recreation Area. The road and area is very muddy when wet.

<b>GPS:</b>	N 38°02'20", W 109°35'19"
<b>Height:</b>	1642 m
<b>Quality:</b>	****
<b>Rate:</b>	--



# Übernachtungsplätze 2018



217. TAG:  
FREITAG, 19.10.2018

BEEF BASIN ROAD, BEARS  
EARS NM  
UTAH

Great Campsite along Beef Basin Road at the foot of Bridger Jack Mesa with nice view to the Abajo Mountains.

<b>GPS:</b>	N 37°57'59", W 109°37'59"
<b>Height:</b>	1905 m
<b>Quality:</b>	*****
<b>Rate:</b>	--



218. TAG:  
SAMSTAG, 20.10.2018

MINERAL BOTTOM ROAD,  
CANYONLANDS  
UTAH

Camping on BLM land between Mineral Bottom Road and UT 313 leading to Canyonlands National Park Island in the Sky district.

<b>GPS:</b>	N 38°33'44", W 109°48'15"
<b>Height:</b>	1795 m
<b>Quality:</b>	***
<b>Rate:</b>	--



# Übernachtungsplätze 2018



219. TAG:  
SONNTAG, 21.10.2018

MINERAL BOTTOM ROAD,  
CANYONLANDS

UTAH

Great Campsite on Slickrock at Horsethief Spring Track branching off from Mineral Bottom Road with an wide view across Horsethief Canyon and the Island in the Sky north of Canyonlands National Park.

**GPS:** N 38°31'18", W 109°56'24"  
**Height:** 1532 m  
**Quality:** \*\*\*\*\*  
**Rate:** --



220. TAG:  
MONTAG, 22.10.2018

SPRING CANYON POINT ROAD,  
CANYONLANDS

UTAH

Another great viewpoint on the Island in the Sky along the rocky and sandy Spring Canyon Point Road ca 5 miles past the gorgeous Secret Spire. You will need 4 WD and high clearance.

**GPS:** N 38°38'28", W 110°00'21"  
**Height:** 1505 m  
**Quality:** \*\*\*\*\*  
**Rate:** --



221. TAG:  
DIENSTAG, 23.10.2018

DESIGNATED CAMPING AREA  
ALONG HWY 313, CANYON-  
LANDS

UTAH

Designated Camping Area along Hwy 313 on BLM Land north of the Island in the Sky District of Canyonlands National Park. Nice view, great sunset, a little noise from the Hwy.

**GPS:** N 38°33'43", W 109°47'44"  
**Height:** 1863 m  
**Quality:** \*\*\*\*\*  
**Rate:** --



# Übernachtungsplätze 2018



222. TAG:  
MITTWOCH, 24.10.2018

BIG FLAT, CANYONLANDS

UTAH

Camping on BLM Land on the way to Mar-  
lboro Point very close to Dead Horse Point  
State Park.

**GPS:** N 38°31'27", W 109°45'25"  
**Height:** 1815 m  
**Quality:** \*\*\*  
**Rate:** --



223. TAG:  
DONNERSTAG, 25.10.2018

UPPER UNION CREEK CAMPG-  
ROUND, COLORADO RIVERWAY  
RECREATION AREA

UTAH

BLM Campground with 14 sites in the  
Colorado Riverway Recreation Area ca 1  
mile from the Highway (quiet) just south of  
Fisher Towers along the nice Onion Creek  
Road. Nice view of the Colorado River  
Valley near Fisher Towers.

**GPS:** N 38°43'11", W 109°20'37"  
**Height:** 1290 m  
**Quality:** \*\*\*\*  
**Rate:** \$ 20



224. TAG:  
FREITAG, 26.10.2018

FISHER TOWERS CAMPGROUND,  
COLORADO RIVERWAY RECREA-  
TION AREA

UTAH

Small BLM Campground with 5 sites at the  
base of Fisher Tower with a great view  
across the Colorado River Valley. Only for  
campers up to 22 feet.

**GPS:** N 38°43'32", W 109°18'32"  
**Height:** 1429 m  
**Quality:** \*\*\*\*  
**Rate:** --



# Übernachtungsplätze 2018



225. TAG:  
SAMSTAG, 27.10.2018

LA SAL MOUNTAIN LOOP ROAD,  
MANTI-LA SAL NF  
UTAH

Great Campsite in Manti-La Sal National Forest with an amazing view to the La Sal Mountains to the West and Arches National Park, Moab Rim, San Rafael Swell and Henry Mountains to the East. The Dirtroad is bumpy but ok with 2 WD.

<b>GPS:</b>	N 38°32'31.5", W 109°20'31"
<b>Height:</b>	2398 m
<b>Quality:</b>	*****
<b>Rate:</b>	--



226. TAG:  
SONNTAG, 28.10.2018

COTTER MINE ROAD NEAR  
COURTHOUSE ROCK  
UTAH

Camping along Cotter Mine Road close to Mill Canyon Dinosaur Tracks. Nice view to Courthouse Rock and Slickenslides Arch, the Klondike Bluffs in Arches National Park and the plains north to I-70.

<b>GPS:</b>	N 38°42'47", W 109°43'48"
<b>Height:</b>	1378 m
<b>Quality:</b>	***
<b>Rate:</b>	--



# Übernachtungsplätze 2018



227. TAG:  
MONTAG, 29.10.2018

LA SAL MOUNTAIN LOOP ROAD,  
MANTI-LA SAL NF  
UTAH

Camping along La Sal Mountain Loop in Manti-La Sal National Forest only 15 miles from Moab. Quiet, fresh mountain air, nice view of the La Sals.

**GPS:** N 38°27'49", W 109°21'59"  
**Height:** 2010 m  
**Quality:** \*\*\*  
**Rate:** --



228. TAG:  
DIENSTAG, 30.10.2018

CRYSTAL GEYSER  
UTAH

Great camping on BLM land at the beautiful travertine terraces of Crystal Geyser along the banks of the Green River. Very remote and quiet.

**GPS:** N 38°56'19", W 110°08'02"  
**Height:** 1239 m  
**Quality:** \*\*\*\*\*  
**Rate:** --







229. - 230. TAG:  
MITTWOCH, 31.10.2018 BIS  
DONNERSTAG, 01.11.2018

## MEXICAN MOUNTAIN ROAD UTAH

One of our favourite campsites in the Southwest. Camping along Mexican Mountain Road with a great view over the San Rafael River Canyon with colorful cottonwoods. Absolutely remote and quiet. The area around Buckhorn Draw is very scenic and only few people know about up to now. There was only 1 tent at the San Rafael Bridge Campground.

<b>GPS:</b>	N 39°04'30", W 110°38'41"
<b>Height:</b>	1530 m
<b>Quality:</b>	*****
<b>Rate:</b>	--





# Übernachtungsplätze 2018



231. TAG:  
FREITAG, 2.11.2018

OIL WELL ROAD, SAN RAFAEL  
SWELL  
UTAH

Camping along La Sal Mountain Loop in Manti-La Sal National Forest only 15 miles from Moab. Quiet, fresh mountain air, nice view of the La Sals.

**GPS:** N 38°59'58", W 110°41'43"  
**Height:** 1774 m  
**Quality:** \*\*\*\*  
**Rate:** --



232. TAG:  
SAMSTAG, 3.11.2018

TEMPLE MOUNTAIN ROAD, SAN  
RAFAEL SWELL  
UTAH

Great Camping along Temple Mountain Road with an amazing view to Temple Mountain, the La Sal Mountains in the background and the San Rafael Reef from behind.

**GPS:** N 38°40'58.5", W 110°43'32"  
**Height:** 1881 m  
**Quality:** \*\*\*\*\*  
**Rate:** --







233. TAG:  
SONNTAG, 4.11.2018

BEHIND THE REEF ROAD, SAN  
RAFAEL SWELL

UTAH

Great Campsite along Behind the Reef Road with a nice view to Temple Mountain and the San Rafael Reef. The Behind the Reef Road is very bumpy with slick rock passages in the beginning and especially beyond Crack Canyon Trailhead.

**GPS:** N 38°39'22", W 110°43'29"  
**Height:** 1753 m  
**Quality:** \*\*\*\*\*  
**Rate:** --



234. TAG:  
MONTAG, 5.11.2018

LITTLE WILD HORSE ROAD,  
SAN RAFAEL SWELL

UTAH

Nice Camping along Little Wild Horse Road just outside Goblin Valley State Park. Nice view of the San Rafael Reef and Wild Horse Butte.

**GPS:** N 38°34'33", W 110°44'21"  
**Height:** 1455 m  
**Quality:** \*\*\*\*\*  
**Rate:** --





# Übernachtungsplätze 2018

---



235. TAG:  
DIENSTAG, 6.11.2018

SKYLINE VIEW, CAINEVILLE  
BADLANDS

UTAH

Absolute gorgeous camping at the less known and remote Skyline View with an incredible 360° view to Henry Mountains, La Sal Mountains in the distant, the colorful badlands of Muddy Creek, 50 miles of the San Rafael Reef and Factory Butte to the east.

<b>GPS:</b>	N 38°27'08", W 110°50'17"
<b>Height:</b>	1511 m
<b>Quality:</b>	*****
<b>Rate:</b>	--







236. TAG:  
MITTWOCH, 7.11.2018

LOWER CATHEDRAL VALLEY

UTAH

Camping in the Lower Cathedral Valley at the Temple of the Sun and Temple of the Moon just outside Capitol Reef National Park. Absolutely quiet and remote.

<b>GPS:</b>	N 38°26'45", W 111°11'26.5"
<b>Height:</b>	1641 m
<b>Quality:</b>	*****
<b>Rate:</b>	--





# Übernachtungsplätze 2018

---



237. TAG:  
DONNERSTAG, 8.11.2018

UPPER CATHEDRAL VALLEY  
CAMPGROUND  
UTAH

Remote primitive National Park Campground with 6 sites without fee in the spectacular Upper Cathedral Valley.

**GPS:** N 38°28'25", W 111°21'58"  
**Height:** 2035 m  
**Quality:** \*\*\*\*  
**Rate:** --



238. TAG:  
FREITAG, 9.11.2018

COAL MINE ROAD NEAR FACTORY BUTTE  
UTAH

Camping along Coal Mine Road close to the extensive Badlands of Factory Butte. Great sunrise location for photographing Factory Butte.

**GPS:** N 38°26'36", W 110°52'56"  
**Height:** 2035 m  
**Quality:** \*\*\*\*  
**Rate:** --





# Übernachtungsplätze 2018



239. TAG:  
SAMSTAG, 10.11.2018

BOWNS RESERVOIR, DIXIE NF  
UTAH

Dispersed Camping at Bowns Reservoir in Dixie National Forest surrounded by juniper and pine trees after 4 weeks, nice after 4 weeks in the desert. There are also 4 established campsites at \$ 12, but we were alone. Totally quiet.

**GPS:** N 38°06'18.5", W 111°16'40"  
**Height:** 2269 m  
**Quality:** \*\*\*\*  
**Rate:** --



240. - 242. TAG:  
SONNTAG, 11.11.2018 BIS  
DIENSTAG, 13.11.2018

OLD SHEFFIELD ROAD,  
GSENM  
UTAH

Great campsite along Old Sheffield Road with an amazing view across the Escalante Canyon towards Henry Mountains and Navajo Mountain and to the Kaiparowits Plateau on the other side.

**GPS:** N 37°43'23", W 111°26'16"  
**Height:** 1821 m  
**Quality:** \*\*\*\*\*  
**Rate:** --





# Übernachtungsplätze 2018



243. TAG:  
MITTWOCH, 14.11.2018

DEVILS GARDEN, HOLE IN THE  
ROCK ROAD, GSENM  
UTAH

Overnight parking at the day use area of Devils Garden because we did some night photography of the beautiful Hoodoos.

**GPS:** N 37°35'08", W 111°24'53"  
**Height:** 1604 m  
**Quality:** \*\*\*\*  
**Rate:** --



244. TAG:  
DONNERSTAG, 15.11.2018

HARRIS WASH ROAD, GSENM  
UTAH

Great Campsite along Harris Wash Road on the Way to Harris Wash Trailhead for Volcano and Red Breaks. Extensive view across Harris Wash with colorful slickrock towards Henry Mountains to the North and the Kaiparowits Plateau to the South.

**GPS:** N 37°36'37", W 111°22'53"  
**Height:** 1672 m  
**Quality:** \*\*\*\*\*  
**Rate:** --



245. TAG:  
FREITAG, 16.11.2018

ALVEY WASH, SMOKY MOUN-  
TAIN ROAD, GSENM  
UTAH

Camping along Smoky Mountain Road in Alvey Wash at Horizon Arch Trailhead.

**GPS:** N 37°42'57", W 111°37'47"  
**Height:** 1833 m  
**Quality:** \*\*\*  
**Rate:** --



# Übernachtungsplätze 2018



246. TAG:  
SAMSTAG, 17.11.2018

CLOSE TO BRICE CANYON NP,  
DIXIE NF  
UTAH

One of many dispersed campsites in Dixie National Forest just outside Bryce Canyon National Park.

**GPS:** N 37°39'44", W 112°09'53"  
**Height:** 2355 m  
**Quality:** \*\*\*  
**Rate:** --



247. TAG:  
SONNTAG, 18.11.2018

ROAD TO YANT FLAT, DIXIE NF  
UTAH

Campsite in Dixie National Forest along the Road to Yant Flat. 1 mile further low branches will block some campers higher than 10 ft. The dirtroad to the campsite is well maintained but somewhat steep in places.

**GPS:** N 37°15'53", W 113°24'51"  
**Height:** 1285 m  
**Quality:** \*\*\*\*  
**Rate:** --



248. TAG:  
MONTAG, 19.11.2018

LOWER SAND COVE ROAD  
UTAH

Camping along Lower Sand Cove Road on BLM Road just behind the „You are entering public lands“-sign. All other sites along Lower Sand Cove Road are on private property and day use only. Nice 360° view, very quiet. Close to Snow Canyon and Gunlock State Parks.

**GPS:** N 37°17'17", W 113°43'06"  
**Height:** 1355 m  
**Quality:** \*\*\*\*  
**Rate:** --



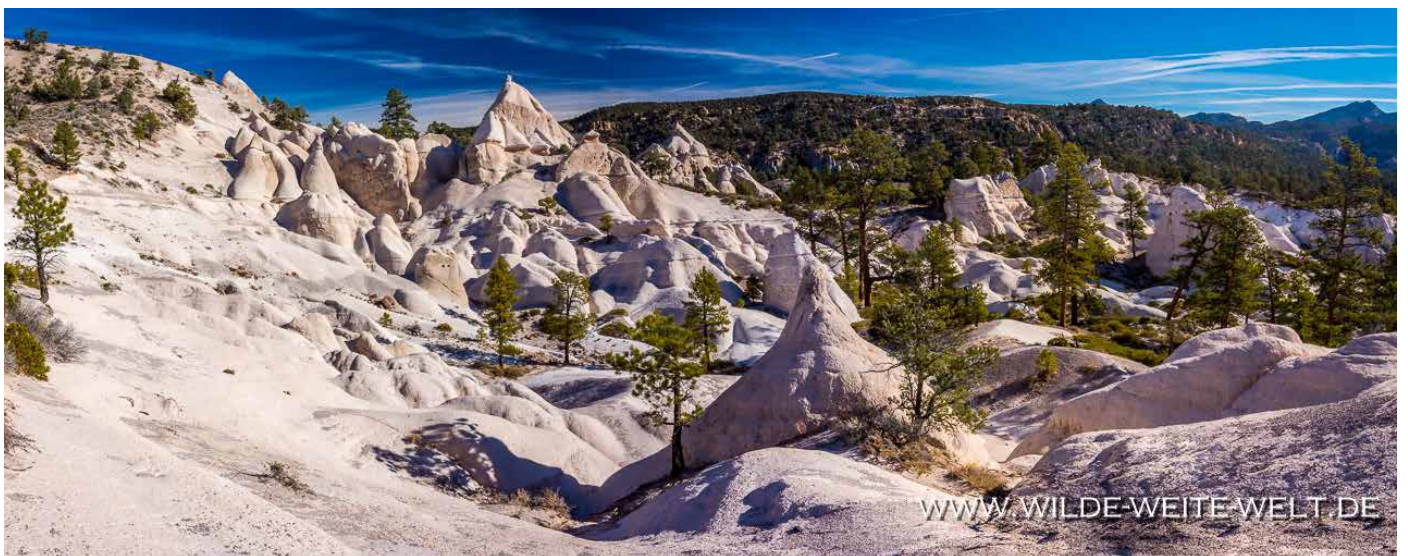


249. TAG:  
DIENSTAG, 20.11.2018

PINE PARK, DIXIE NF  
UTAH

Small primitive Campground at the end of the road to Pine Park in the middle of nowhere. The tuff formations at Pine Park are very beautiful and reminiscent to Kasha Katuwe Tent Rocks in New Mexico or Wheeler Geologic Area in Colorado.

<b>GPS:</b>	N 37°31'15", W 114°01'29"
<b>Height:</b>	1676 m
<b>Quality:</b>	***
<b>Rate:</b>	--

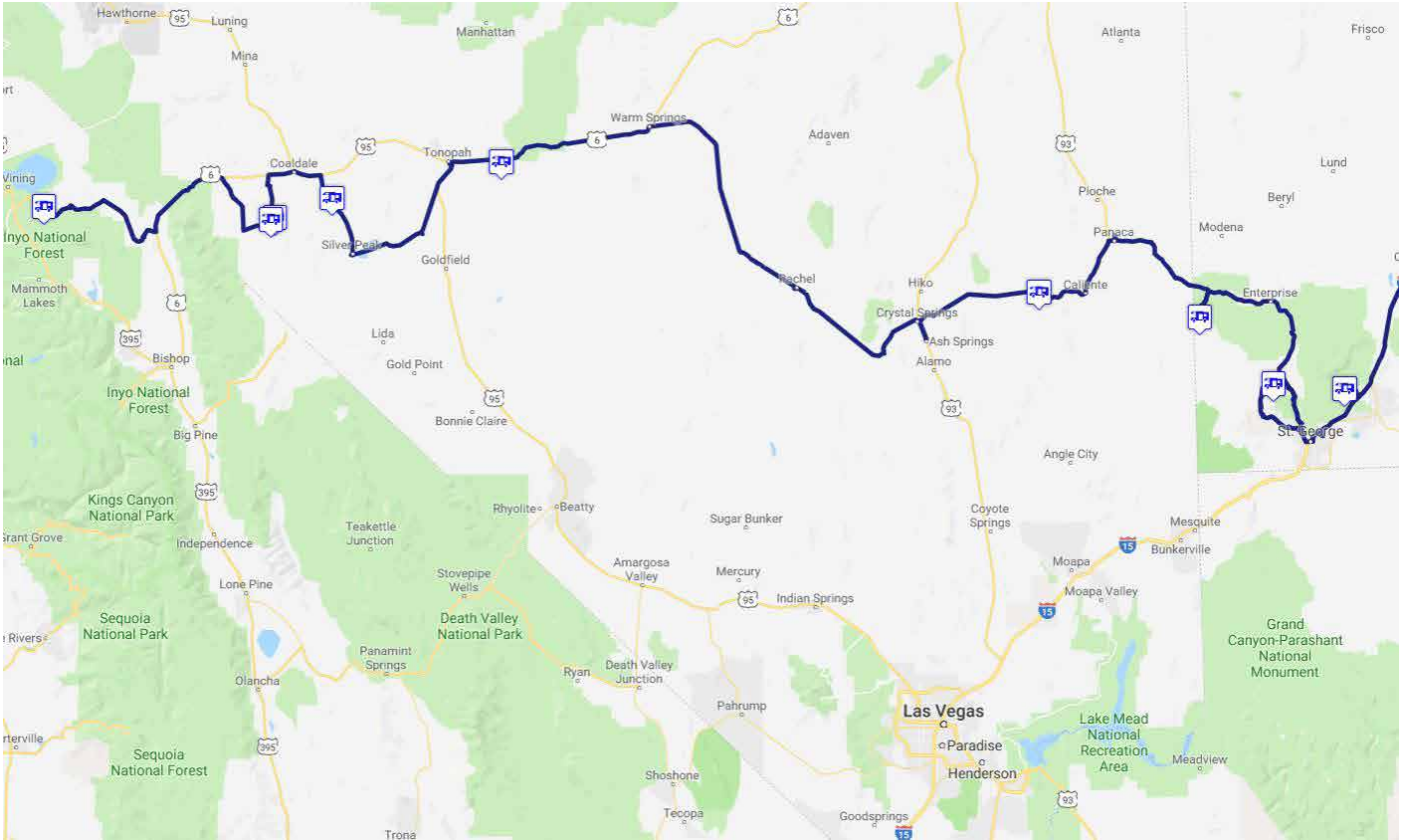




# Übernachtungsplätze 2018

## NEVADA

21.11.2018 BIS 26.11.2018



**Nevada:** 5 Tage - 630 km - 126 km pro Tag





250. TAG:  
MITTWOCH, 21.11.2018

OAK SPRINGS TRILOBITE SITE  
NEVADA

Nice Campsite with picnic tables at Oak Springs Trilobite Site near Oak Springs Pass along Hwy 93.

**GPS:** N 37°36'50", W 114°42'43"  
**Height:** 1757 m  
**Quality:** \*\*\*  
**Rate:** --



251. TAG:  
DONNERSTAG, 22.11.2018

GREAT BASIN, US 6 EAST OF  
TONOPAH  
NEVADA

Camping at an old water well in the middle of nowhere 14 miles east of Tonopah along US 6. 360° view for endless miles across the Great Basin Desert.

**GPS:** N 38°03'50.5", W 117°00'08"  
**Height:** 1637 m  
**Quality:** \*\*\*\*  
**Rate:** --







252. TAG:  
FREITAG, 23.11.2018

NIVLOC ROAD TO SILVER PEAK,  
GREAT BASIN  
NEVADA

Camping at a side track from Nivloc Road to Silver Peak in the middle of nowhere with a great view across the Great Basin Desert.

**GPS:** N 37°56'07.5", W 117°43'30"  
**Height:** 1467 m  
**Quality:** \*\*\*\*\*  
**Rate:** --



253. TAG:  
SAMSTAG, 24.11.2018

EMIGRANT PASS ROAD BEHIND  
FISH LAKE HOT SPRING, GREAT  
BASIN  
NEVADA

Great Campsite on a small hill overlooking a dry lake in Fish Lake Valley with the colorful Emigrant Peak to the East and the snow covered White Mountains to the West. The Area around Fish Lake Hot Spring was very crowded with 15 Campers, so we moved here.

**GPS:** N 37°52'04.5", W 117°58'04"  
**Height:** 1440 m  
**Quality:** \*\*\*\*\*  
**Rate:** --



254. TAG:  
SONNTAG, 25.11.2018

FISH LAKE HOT SPRING, GREAT  
BASIN  
NEVADA

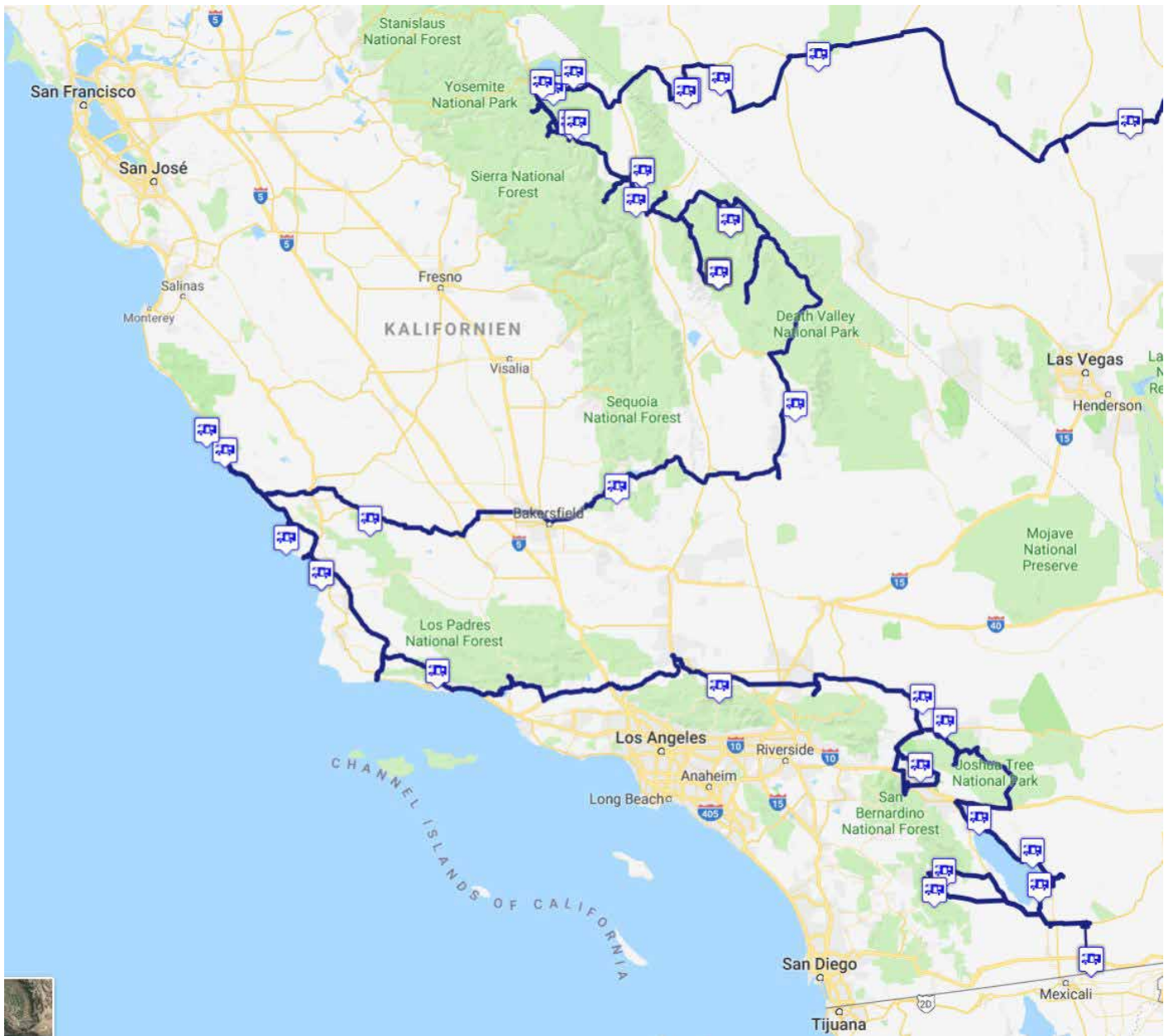
There is a lots of space for camping around Fish Lake Hot Spring with a nice view over Fish Lake Valley and the White Mountains.

**GPS:** N 37°51'40", W 117°59'04"  
**Height:** 1443 m  
**Quality:** \*\*\*\*\*  
**Rate:** --



## KALIFORNIEN

26.11.2018 BIS 1.1.2019



**Kalifornien:** 36 Tage - 3547 km - 99 km pro Tag



# Übernachtungsplätze 2018



255. TAG:  
MONTAG, 26.11.2018

MONO MILLS, INYO NATIONAL  
FOREST  
CALIFORNIA

Nice place in Inyo National Forest in a  
Jeffrey Pine Forest overlooking Mono Lake  
and the Sierra. Cold and quiet.

**GPS:** N 37°53'22", W 118°57'40"  
**Height:** 2233 m  
**Quality:** \*\*\*\*  
**Rate:** --



256. TAG:  
DIENSTAG, 27.11.2018

PANUM CRATER, MONO BASIN  
CALIFORNIA

Great place for camping on a side track  
leading towards Panum Crater on a ridge  
overlooking Mono Lake to the east and the  
Sierra to the West.

**GPS:** N 37°55'21.5", W 119°02'31"  
**Height:** 2102 m  
**Quality:** \*\*\*\*\*  
**Rate:** --



257. TAG:  
MITTWOCH, 28.11.2018

LITTLE HOT CREEK, HOT  
CREEK GEOLOGIC AREA  
CALIFORNIA

Camping along Little Hot Creek at the  
soaking pool built by the forest service. The  
dirtroad along hot creek to the pool from  
the east is better then from the west where  
high clearance is necessary. Keep in mind  
that it can get busy in the evening.

**GPS:** N 37°41'25", W 118°50'33"  
**Height:** 2126 m  
**Quality:** \*\*\*\*\*  
**Rate:** --



# Übernachtungsplätze 2018



258. TAG:  
DONNERSTAG, 29.11.2018

WHITMORE TUBS ROAD AT HOT  
TUB, HOT CREEK GEOLOGIC  
AREA

CALIFORNIA

Overnight parking along the short side  
track to Hot Tub in 25 cm deep snow. Hot  
Tub was much too cold to bath.

**GPS:** N 37°58'52", W 118°48'36"  
**Height:** 2131 m  
**Quality:** \*\*\*  
**Rate:** --



259. TAG:  
FREITAG, 30.11.2018

PIT ROAD NORTH OF ALKALI  
LAKE, HOT CREEK GEOLOGIC  
AREA

CALIFORNIA

Overnight parking along Pit Road north  
of Alkali Lake in 25 cm deep snow after  
soaking in Pully's Pool.

**GPS:** N 37°41'15", W 118°47'31"  
**Height:** 2100 m  
**Quality:** \*\*  
**Rate:** --



260. - 261. TAG:  
SAMSTAG, 1.12.2018 BIS  
SONNTAG, 2.12.2018

SILVER CANYON ROAD, BIS-  
HOP, INYO NF

CALIFORNIA

Many dispersed campsites at the foot of  
the White Mountains along Silver Canyon  
Road. The view over the Owens River Valley  
to the Mountains of the Sierra Nevada is  
great. The dirtroad is washbordy but fine  
with 2 WD.

**GPS:** N 37°24'19", W 118°19'00"  
**Height:** 1341 m  
**Quality:** \*\*\*\*  
**Rate:** --





262. TAG:  
MONTAG, 3.12.2018

OLD HWY 395 SOUTH OF  
KEOUGH HOT DITCH

CALIFORNIA

Camping along west of Old Highway 395 on a dirtroad towards the Sierra Nevada. Just 1 mile south of Keough Hot Ditch with a nice view over the Owens River Valley and to the White Mountains.

**GPS:** N 37°14'15", W 118°22'03"  
**Height:** 1310 m  
**Quality:** \*\*\*  
**Rate:** --



263. - 269. TAG:  
DIENSTAG, 4.12.2018 BIS  
MONTAG, 10.12.2018

SALINE VALLEY WARM SPRINGS  
DEATH VALLEY NATIONAL PARK

CALIFORNIA

Dispersed Camping at a real oasis in the desert at the Saline Valley Warm Springs. The road is rough with a lot of stones but well maintained. It will take 3,5-4 hours from Big Pine to the Hot Spring. There was no obstacle coming in over North Pass (except some snow on the upper section of the North Pass) and other people told us the same about the road across South Pass.

**GPS:** N 37°48'22.5", W 117°46'28.5"  
**Height:** 420 m  
**Quality:** \*\*\*\*\*  
**Rate:** --





# Übernachtungsplätze 2018

---



270. - 271. TAG:  
DIENSTAG, 11.12.2018 BIS  
MITTWOCH, 12.12.2018

EUREKA DUNES, DEATH VALLEY  
NATIONAL PARK  
CALIFORNIA

Small Backcountry Campground with picnic tables, fire rings and a pit toilet at the base of Eureka Dunes. The last 10 miles to the dunes are terrible washboardy. If you are looking for a remote campsite - this is it: we were the only people in the whole Eureka Valley.

**GPS:** N 37°06'42.5", W 117°40'51"  
**Height:** 876 m  
**Quality:** \*\*\*\*\*  
**Rate:** --



272. TAG:  
DONNERSTAG, 13.12.2018

BALLARAT ROAD, PANAMINT  
VALLEY  
CALIFORNIA

Overnight parking in the vast desert of Panamint Valley along Ballarat Road at the edge of a dry lake.

**GPS:** N 36°01'57", W 117°14'39"  
**Height:** 320 m  
**Quality:** \*\*\*  
**Rate:** --



# Übernachtungsplätze 2018



273. TAG:  
FREITAG, 14.12.2018

HOB0 CAMPGROUND DAY USE  
AREA AT MIRACLE HOT SPRING,  
SEQUOIA NF  
CALIFORNIA

Overnight parking at the day use area of closed Hobo Campground in the Kern River Valley. There is plenty of space and 3 more campers were already there. Quiet but you sleep with the brawling of Kern River.

**GPS:** N 35°34'30", W 118°31'49"  
**Height:** 681 m  
**Quality:** \*\*\*  
**Rate:** --



274. TAG:  
SAMSTAG, 15.12.2018

RED HILL ROAD, LOS PADRES  
NF  
CALIFORNIA

Overnight parking at Red Hill Road in Los Padres National Forest. We parked along the road. There is no traffic, the view is nice, the place itself is quiet but not beautiful. OK for one night.

**GPS:** N 35°23'36", W 120°17'08"  
**Height:** 624 m  
**Quality:** \*\*  
**Rate:** --



275. TAG:  
SONNTAG, 16.12.2018

RUGGED POINT, HWY No. 1,  
LOS PADRES NF  
CALIFORNIA

Overnight parking at a pullout along Hwy No. 1 just south of Rugged Point. Nice ocean view, the Hwy is noisy during daytime, ok during night.

**GPS:** N 35°46'32.5", W 120°19'39"  
**Height:** 96 m  
**Quality:** \*\*  
**Rate:** --



# Übernachtungsplätze 2018



276. TAG:  
MONTAG, 17.12.2018

WILLOW CREEK ROAD, HWY  
NO. 1, LOS PADRES NF  
CALIFORNIA

Camping at one of several pullouts along Willow Creek Road in Los Padres National Forest. The dirtroad is partly steep with steep cliffs at the side. 4 WD is helpful, with 2 WD you have to use extra caution.

**GPS:** N 35°53'23", W 121°21'36"  
**Height:** 97 m  
**Quality:** \*\*\*\*  
**Rate:** --



277. TAG:  
DIENSTAG, 18.12.2018

MONTANA DE ORO STATE PARK,  
SITE 40  
CALIFORNIA

Quiet Camground with big paved sites, picnic tables, fire rings and pit toilets. Unfortunately no ocean view, some sites are shaded from Cypress trees. \$ 25 is relatively cheap compared with other State Park Campgrounds along Highway No 1.

**GPS:** N 35°16'32", W 120°52'45"  
**Height:** 42 m  
**Quality:** \*\*\*  
**Rate:** \$ 25



278. - 279. TAG:  
MITTWOCH, 19.12.2018 BIS  
DONNERSTAG, 20.12.2018

OCEANO DUNES STATE VEHI-  
CULAR RECREATION AREA  
CALIFORNIA

Camping at the beach south of Pismo Beach in Oceano Dunes State Vehicular Recreation Area. We were lucky just before christmas and in the middle of the week were only 15 Campers in the dunes. So it was very quiet. In the soft sand you will definitely need 4 WD.

**GPS:** N 35°04'24", W 120°37'40"  
**Height:** 3 m  
**Quality:** \*\*\*\*  
**Rate:** \$ 10



# Übernachtungsplätze 2018



280. TAG:  
FREITAG, 21.12.2018

CAMINO CIELO ROAD, LOS  
PADRES NF  
CALIFORNIA

Overnight parking at a viewpoint along Camino Cielo Road in Los Padres National Forest. The view to the Pacific 780 m below and the Channel Islands is great. There is very view traffic on the road during night, so it's a quiet place.

**GPS:** N 34°30'38", W 119°48'21"  
**Height:** 782 m  
**Quality:** \*\*\*  
**Rate:** --



281. TAG:  
SAMSTAG, 22.12.2018

SYCAMORE FLAT CAMPG-  
ROUND, ANGELES NF  
CALIFORNIA

Forest Service Campground along Big Creek Road in Angeles National Forest. Pit toilets and fire rings available. Not a nice setting, but quiet and ok for one night. You need an Adventure Pass (\$5).

**GPS:** N 34°24'50", W 117°49'32"  
**Height:** 1291 m  
**Quality:** \*\*\*  
**Rate:** --



282. TAG:  
SONNTAG, 23.12.2018

GIANT ROCK ROAD, LANDERS  
CALIFORNIA

Big area out of Landers along Giant Rock Road 1 mile south of Giant Rock with a nice view over the desert. Quiet. Dirtroad is fine. At Giant Rock is a lot of graffiti and broken glass, our campsite was quite clean.

**GPS:** N 34°19'00", W 116°23'42"  
**Height:** 877 m  
**Quality:** \*\*\*  
**Rate:** --



# Übernachtungsplätze 2018



283. TAG:  
MONTAG, 24.12.2018

SAMS FAMILY SPA, DESERT  
HOT SPRINGS

CALIFORNIA

Big RV Mobil Home and RV Park with full hookup on gravel lots for \$60 inkl use of the 4 big hot pools, sauna, cool swimming pool (day use is \$18/\$25 p.P. on weekends). The RV Park is quiet, very clean and pretty with a lot of palms and every amenity you can think about. The pool area is great and it is well worth the money.

<b>GPS:</b>	N 33°55'19", W 116°25'26"
<b>Height:</b>	347 m
<b>Quality:</b>	***
<b>Rate:</b>	\$ 60



284. TAG:  
DIENSTAG, 25.12.2018

SUNFLOWER ROAD, JOSHUA  
TREE

CALIFORNIA

Camping in the desert north of Joshua Tree. There is lots of level space. Quiet, nice view over the valley.

<b>GPS:</b>	N 34°10'17", W 116°14'26"
<b>Height:</b>	731 m
<b>Quality:</b>	***
<b>Rate:</b>	--





285. TAG:  
MITTWOCH, 26.12.2018

PAINTED CANYON ROAD, MEC-  
CA HILLS  
CALIFORNIA

Nice camping in a wash along Painted Canyon Road to Ladder Canyon trail with a great view towards Salton Sea. You are camping in a wash, so beware of flash floods. Very quiet.

<b>GPS:</b>	N 33°36'17", W 116°01'26"
<b>Height:</b>	54 m
<b>Quality:</b>	*****
<b>Rate:</b>	--





# Übernachtungsplätze 2018



286. TAG:  
DONNERSTAG, 27.12.2018

FOUNTAIN OF YOUTH RV PARK,  
NILAND

CALIFORNIA

Very big RV Park with more than 700 RV sites and 300 residents in Mobil Homes. Cheap dry camping (\$22,5 with AAA discount) includes the use of the 6 big hot pools with jets (great), steam room, private tubs, gym, ... The upper dry camping sites are on a big gravel area with narrow marked sites - not very nice. Some RVs run their generators.

**GPS:** N 33°23'55", W 115°39'29"  
**Height:** 6 m  
**Quality:** \*\*  
**Rate:** \$ 22,50



287. TAG:  
FREITAG, 28.12.2018

RED HILL MARINA COUNTY  
PARK, SALTON SEA

CALIFORNIA

Camping at the abandoned boat ramp of Red Hill Marina County Park. There are shaded picnic tables. The shoreline of Salton Sea with lots of gulls is now ca 500 yards away. Not a beautiful place, but very quiet.

**GPS:** N 33°11'42", W 115°36'52"  
**Height:** -72 m  
**Quality:** \*\*\*  
**Rate:** --



288. TAG:  
SAMSTAG, 29.12.2018

ROCKHOUSE TRAIL TO CLARK  
DRY LAKE, ANZA BORREGO SP  
CALIFORNIA

Big gravel area along Rockhouse Trail to Clark Dry Lake on BLM Land close to Anza Borrego State Park. We shared the place with nearly 100 more campers on Saturday evening. But there is lots of space and people are quiet and mostly without ATVs.

**GPS:** N 33°18'03", W 116°06'52"  
**Height:** 132 m  
**Quality:** \*\*\*  
**Rate:** --



# Übernachtungsplätze 2018



289. TAG:  
SONNTAG, 30.12.2018

BORREGO SPRINGS SCULPTURE GARDEN  
CALIFORNIA

Camping along a dirt road south of Borrego Springs Road near the sculptures from Ricardo Breceda surrounded by lots of cacti. Nice view across the Borrego Desert. Absolutely quiet.

**GPS:** N 33°11'37", W 116°21'00"  
**Height:** 262 m  
**Quality:** \*\*\*\*  
**Rate:** --



290. TAG:  
MONTAG, 31.12.2018

HOLTVILLE HOT SPRINGS  
CALIFORNIA

Camping along Highline Canal south of I-8 close to Holtville Hot Springs. The area north and south of I-8 is reserved for long term camping (14 days: \$40, 6 months: \$180) but ca 2 miles south of the Interstate is 14 days free camping on BLM Land. It's also much quieter here. The dirtroad is fine all the way.

**GPS:** N 32°45'00", W 115°16'14"  
**Height:** 13 m  
**Quality:** \*\*\*  
**Rate:** --



291. TAG:  
DIENSTAG, 1.1.2019

HOLTVILLE HOT SPRINGS  
CALIFORNIA

Camping along Highline Canal south of I-8 close to Holtville Hot Springs. The area north and south of I-8 is reserved for long term camping (14 days: \$40, 6 months: \$180) but ca 2 miles south of the Interstate is 14 days free camping on BLM Land. It's also much quieter here. The dirtroad is fine all the way.

**GPS:** N 32°44'08", W 115°16'26"  
**Height:** 16 m  
**Quality:** \*\*\*  
**Rate:** --